

KINGPINLESS STYLE 154 SWIVEL ON SWIVEL (SoS)



FEATURES

Swivel Section: Sealed precision ball bearing with hardened raceways and neoprene seals.

Legs: 3/8" x 2-3/4" steel, formed and continuously welded on the inside and outside of the yoke base.

Kingpin: Kingpinless style design.

Axle: 3/4" diameter.

Lubrication: Sealed ball bearing is lubricated and requires zero maintenance.

Wheels: 6" to 12" diameter wheels are available with sealed precision ball bearings.

Finish: Clear zinc plating.

APPLICATIONS

Excellent for production racks and fixtures, parts bins, conveyor systems, and other applications where maintenance-free casters and ergonomics are concerns. Also works well for carts and Automated Guided Vehicles that need to maneuver in tight spaces.

BENEFITS

The 154 series dual swivel section is maintenance free with its sealed precision ball bearing in the swivel section and in the wheels. The dual swivel action reduces castering effect, making it possible for a cart to go forwards and back in a straight line. This improves maneuverability in tight spaces and help reduce ergonomic push/pull forces.

OPTIONS

BRAKES

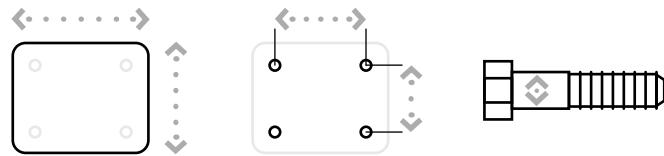
Poly Lock: P*
Face Contact: F

TOE GUARD: TG

* For wheels with a diameter > 6"

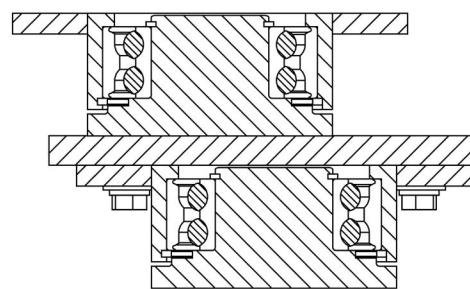
MAXIMUM CAPACITY

3,500 lbs.



Top Plate Size	Bolt Hole Spacing	Bolt Diameter
Standard: 5" x 7.25"	3.375" x 5.25" Slotted to 4.125" x 6.125"	0.5"

154 SERIES TOP PLATE



KINGPINLESS STYLE 154 SWIVEL ON SWIVEL (SoS)

PRECISION BALL BEARING

Diameter	Width	Material	Capacity	OAH	Swivel Radius	Swivel Lead	Part Number	Weight
6	3.00	ErgoTread	1,560	11.25	8.14	5.00	154-06302-40-1	39.80
6	3.00	ErgoTread	1,560	11.25	8.14	5.00	154-06302-44-1	31.80
6	3.00	T/R Polyurethane	1,640	11.25	8.14	5.00	154-06302-61-1	39.80
6	3.00	HPPT Polyurethane	2,300	11.25	8.14	5.00	154-06302-90-1	39.80
6	3.00	T/R-95 Polyurethane	2,070	11.25	8.14	5.00	154-06302-91-1	39.80
6	3.00	T/R Polyurethane	1,640	11.25	8.14	5.00	154-06302-93-1	31.80
6	3.00	T/R-95 Polyurethane	2,070	11.25	8.14	5.00	154-06302-94-1	31.80
8	3.00	ErgoTread	1,900	13.25	9.12	5.00	154-08302-40-1	44.30
8	3.00	ErgoTread	1,900	13.25	9.12	5.00	154-08302-44-1	34.40
8	3.00	T/R Polyurethane	2,000	13.25	9.12	5.00	154-08302-61-1	44.30
8	3.00	HPPT Polyurethane	3,100	13.25	9.12	5.00	154-08302-90-1	44.30
8	3.00	T/R-95 Polyurethane	2,800	13.25	9.12	5.00	154-08302-91-1	44.30
8	3.00	T/R Polyurethane	2,000	13.25	9.12	5.00	154-08302-93-1	34.40
8	3.00	T/R-95 Polyurethane	2,800	13.25	9.12	5.00	154-08302-94-1	34.40
10	3.00	ErgoTread	2,280	15.25	10.11	5.00	154-10302-40-1	50.40
10	3.00	ErgoTread	2,280	15.25	10.11	5.00	154-10302-44-1	36.90
10	3.00	T/R Polyurethane	2,400	15.25	10.11	5.00	154-10302-61-1	50.40
10	3.00	HPPT Polyurethane	3,450	15.25	10.11	5.00	154-10302-90-1	50.40
10	3.00	T/R-95 Polyurethane	3,100	15.25	10.11	5.00	154-10302-91-1	50.40
10	3.00	T/R Polyurethane	2,400	15.25	10.11	5.00	154-10302-93-1	36.90
10	3.00	T/R-95 Polyurethane	3,100	15.25	10.11	5.00	154-10302-94-1	36.90
12	3.00	ErgoTread	2,660	18.25	11.10	5.00	154-12302-40-1	58.10
12	3.00	ErgoTread	2,660	18.25	11.10	5.00	154-12302-44-1	40.50
12	3.00	T/R Polyurethane	2,800	18.25	11.10	5.00	154-12302-61-1	58.10
12	3.00	HPPT Polyurethane	3,500	18.25	11.10	5.00	154-12302-90-1	58.10
12	3.00	T/R-95 Polyurethane	3,400	18.25	11.10	5.00	154-12302-91-1	58.10
12	3.00	T/R Polyurethane	2,800	18.25	11.10	5.00	154-12302-93-1	40.50
12	3.00	T/R-95 Polyurethane	3,400	18.25	11.10	5.00	154-12302-94-1	40.50

Capacity listed is for manual operation. For powered operations, consult factory.
All dimensions are in inches. All weights are in pounds.