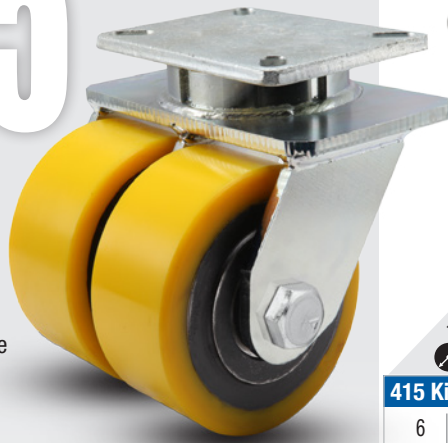


# 415 615

## Kingpinless Dual Wheel Casters CAPACITY TO 12000

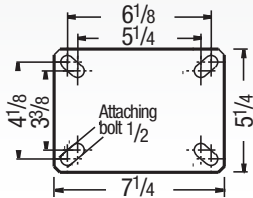
Made in the USA



415 Polyurethane on Iron (PF)

The 415 and 615 Series are dual wheel versions of our popular 410 and 610 Contender Kingpinless Series, with the addition of a third full leg for even greater durability. These remarkably durable dual wheel series provide easy turning and a sturdy footprint you can rely on.

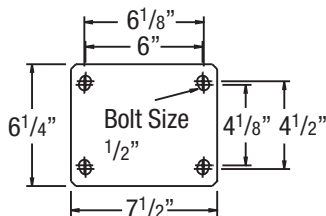
### 415 MOUNTING OPTION



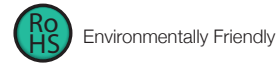
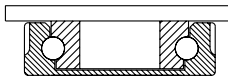
### 415 SWIVEL CROSS SECTION



### 615 MOUNTING OPTION



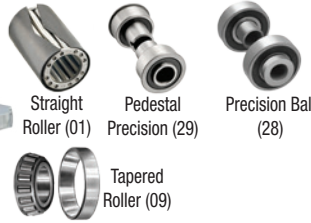
### 615 SWIVEL CROSS SECTION



### FEATURES

- New laser-cut steel rigs and many wheels now **Made in the USA**
- See 410 (page 50) and 610 Series section (page 52) for features and mounting options

### BEARING OPTIONS



### RIG OPTIONS



PLB Integrated specify **PLB**

Hand Operated Swivel Lock specify **L**



Add **TOE** to end of Caster Number to specify integrated toe guard. Standard model toe guards are 1/2" from floor

+ For swivel models add "S", for rigid model add "R" to end of base caster number.

Wheel Diameter (Inches)	Tread Width (Inches)	Capacity (Lbs) (Base for metal operation)	Overall Height (Inches)	Swivel Lead (Inches)	Wheel Type	Base Caster Number+ Roller Bearing (01), Precision Ball (28)	Base Caster Number+ Tapered Roller Bearing (09)
<b>415 Kingpinless Dual Wheel</b>							
6	3	4000	8	2.25	Phenolic	415TM06501	415TM06509
6	3	4080	8	2.25	Polyurethane/Iron (Green)	415PY06501	415PY06509
6	3	5400	8	2.25	Cast Iron	415CA06501	415CA06509
6	3	5400	8	2.25	Trionix™	415NX06528	
6	3	5400	8	2.25	Polyurethane/Iron (Yellow)	415PF06528	
8	3	1800	10 1/2	2.75	Mold-on Rubber/Iron	415MR08501	415MR08509
8	3	5040	10 1/2	2.75	Polyurethane/Iron (Green)	415PY08501	415PY08509
8	3	5400	10 1/2	2.75	Polyurethane/Iron (Yellow)	415PF08528	
8	3	5000	10 1/2	2.75	Phenolic	415TM08501	415TM08509
8	3	5400	10 1/2	2.75	Cast Iron	415CA08501	415CA08509
8	3	5400	10 1/2	2.75	Trionix™	415NX08528	
10	3	2000	12 1/2	3.38	Mold-on Rubber/Iron	415MR10501	415MR10509
10	3	5400	12 1/2	3.38	Polyurethane/Iron (Green)	415PY10501	415PY10509
10	3	5400	12 1/2	3.38	Polyurethane/Iron (Yellow)	415PF10528	
10	3	5400	12 1/2	3.38	Phenolic	415TM10501	415TM10509
10	3	5400	12 1/2	3.38	Cast Iron	415CA10501	415CA10509
10	3	5400	12 1/2	3.38	Trionix™	415NX10528	
12	3	5400	15 1/2	4.13	Polyurethane/Iron (Green)	415PY12501	415PY12506
12	3	5400	15 1/2	4.13	Polyurethane/Iron (Yellow)	415PF12528	
12	3	5400	15 1/2	4.13	Phenolic	415TM12501	415TM12509
12	3	5400	15 1/2	4.13	Cast Iron	415CA12501	415CA12509

See 410 Series section on pages 50-51 for wheel appearance and descriptions.

### 615 Kingpinless Dual Wheel

6	3	7200	8 1/2	2 1/2	Trionix™	615NX06528	
6	3	7600	8 1/2	2 1/2	Polyurethane/Iron (Yellow)	615PF06528	
6	3	10000	8 1/2	2 1/2	Drop Forged	615FS06501	615FS06509
8	3	10000	10 1/2	2 1/2	Laminated Phenolic		615TL08509
8	3	5040	10 1/2	2 1/2	Polyurethane/Iron	615PH08501	615PY08509
8	3	7200	10 1/2	2 1/2	Trionix™	615NX08528	
8	3	8000	10 1/2	2 1/2	Polyurethane/Iron (Yellow)	61PF08528	
8	3	5040	10 1/2	2 1/2	Polyurethane/Iron	615PH08501	615PY08509
8	4	7000	10 1/2	2 1/2	Polyurethane/Iron	615PY08701	615PY08709
10	3	10000	12 1/2	2 1/2	Laminated Phenolic		615TL10509
10	3	6000	12 1/2	2 1/2	Polyurethane/Iron	615PH10501	615PY10509
10	3	7200	12 1/2	2 1/2	Trionix™	615NX10528	
10	3	8400	12 1/2	2 1/2	Polyurethane/Iron (Yellow)	615PF10528	
10	3	10000	12 1/2	2 1/2	Drop Forged	615FH10501	615FH10509
10	4	10000	12 1/2	2 1/2	Drop Forged		615FH10709
10	4	8400	12 1/2	2 3/4	Polyurethane/Iron	615PY10701	615PY10709
10	5	10000	12 1/2	2 3/4	Polyurethane/Iron	615PY10801	615PY10809
12	3	6840	15 1/2	2 1/2	Polyurethane/Iron	615PH12501	615PY12509
12	3-1/2	10000	15 1/2	2 1/2	Ductile Iron	615FM12601	615FM12609
12	3-1/2	10000	15 1/2	2 1/2	Laminated Phenolic	615TL12601	615TL12609
12	3-1/2	8220	15 1/2	2 1/2	Polyurethane/Iron	615PY12601	615PY12609
12	3-1/2	8000	15 1/2	2 1/2	Phenolic	615TM12601	615TM12609
12	4	9600	15 1/2	2 1/2	Polyurethane/Iron	615PY12701	615PY12709
12	5	12000	15 1/2	2 1/2	Polyurethane/Iron		615PY12809

See 610 Series section on pages 52-53 for wheel appearance and descriptions.