

# KINGPINLESS STYLE 57 SERIES



## FEATURES

- Swivel Section:** Sealed precision ball bearing with hardened raceways and neoprene seals.
- Legs:** 1/4" x 2" steel and continuously welded on the inside and outside of the yoke base.
- Kingpin:** Kingpinless style design.
- Axle:** 1/2" diameter.
- Lubrication:** Sealed ball bearing is lubricated and requires zero maintenance.
- Wheels:** 6" to 10" diameter wheels are available with sealed precision ball bearings.
- Finish:** Clear zinc plating.

## APPLICATIONS

Excellent for production racks and fixtures, parts bins, conveyor systems, and other applications where maintenance-free casters and ergonomics are concerns.

## BENEFITS

The 57 Series is maintenance free with its sealed precision ball bearing in the swivel section and in the wheels. The smooth rotation and extended lead help lower ergonomic forces.

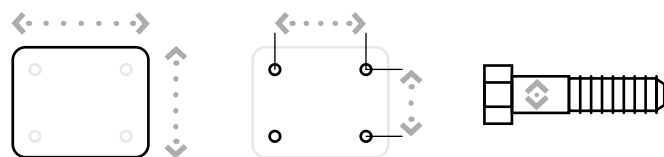
## OPTIONS

- BRAKES**
- Cam: ..... C<sup>^</sup>
  - Poly Lock: ..... P<sup>\*</sup>
  - Face Contact: ..... F
- SWIVEL LOCKS**
- Factory Installed: ..... L
  - Demountable: ..... DL
  - Foot Actuated: ..... KL
- TOE GUARD:** ..... TG

<sup>\*</sup> For wheels with a diameter > 6"  
<sup>^</sup> Not compatible with TWERGO® wheels

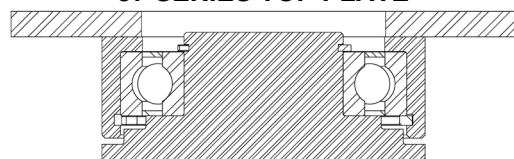
### MAXIMUM CAPACITY

# 1,500 lbs.



Top Plate Size	Bolt Hole Spacing	Bolt Diameter
Standard: 4.5" x 6.25"	2.438" x 4.938" Slotted to 3.375" x 5.25"	0.5"
Optional Top Plate 70: 5" x 7.25"	3.375" x 5.25" Slotted to 4.125" x 6.125"	0.5"

### 57 SERIES TOP PLATE



# KINGPINLESS STYLE 57 SERIES

## PRECISION BALL BEARING

Diameter	Width	Material	Capacity	OAH	Swivel Radius	Swivel Lead	Part Number	Weight
6	2.00	T/R Polyurethane	960	8.31	5.84	2.75	57-06202-61-1	12.00
6	2.00	ErgoTread	760	8.31	5.84	2.75	57-06202-43-1	12.00
6	2.00	T/R-95 Polyurethane	1,400	8.31	5.84	2.75	57-06202-91-1	12.00
6	2.00	Standard Polyurethane	1,000	8.31	5.84	2.75	57-06202-50-1	12.00
6	2.00	T/R Polyurethane	800	8.31	5.84	2.75	57-06202-51-1	12.00
6	2.00	Hard Polyurethane (70D)	1,000	8.31	5.84	2.75	57-06202-53-1	12.00
6	2.00	T/R-95 Polyurethane	1,100	8.31	5.84	2.75	57-06202-56-1	12.00
6	2.00	HPPT Polyurethane	1,500	8.31	5.84	2.75	57-06202-90-1	12.00
6	2.00	T/R Polyurethane	960	8.31	5.84	2.75	57-06202-93-1	12.00
6	2.00	T/R-95 Polyurethane	1,400	8.31	5.84	2.75	57-06202-94-1	12.00
6	2.00	ErgoTread	910	8.31	5.84	2.75	57-06202-44-1	12.00
8	2.00	T/R Polyurethane	1,240	10.13	6.82	2.75	57-08202-61-1	16.00
8	2.00	ErgoTread	760	10.13	6.82	2.75	57-08202-43-1	16.00
8	2.00	T/R-95 Polyurethane	1,500	10.13	6.82	2.75	57-08202-91-1	16.00
8	2.00	Standard Polyurethane	1,000	10.13	6.82	2.75	57-08202-50-1	16.00
8	2.00	T/R Polyurethane	800	10.13	6.82	2.75	57-08202-51-1	16.00
8	2.00	Hard Polyurethane (70D)	1,000	10.13	6.82	2.75	57-08202-53-1	16.00
8	2.00	T/R-95 Polyurethane	1,100	10.13	6.82	2.75	57-08202-56-1	16.00
8	2.00	HPPT Polyurethane	1,500	10.13	6.82	2.75	57-08202-90-1	16.00
8	2.00	T/R Polyurethane	1,240	10.13	6.82	2.75	57-08202-93-1	16.00
8	2.00	T/R-95 Polyurethane	1,500	10.13	6.82	2.75	57-08202-94-1	16.00
8	2.00	ErgoTread	1,180	10.13	6.82	2.75	57-08202-44-1	16.00
10	2.00	T/R Polyurethane	1,500	12.50	8.06	3.00	57-10202-93-1	14.67
10	2.00	ErgoTread	1,500	12.50	8.06	3.00	57-10202-44-1	14.67
10	2.00	T/R-95 Polyurethane	1,500	12.50	8.06	3.00	57-10202-94-1	14.67
10	2.00	T/R Polyurethane	1,400	12.50	8.06	3.00	57-10202-46-1	14.67
10	2.00	ErgoTread	1,500	12.50	8.06	3.00	57-10202-42-1	14.67
10	2.00	T/R-95 Polyurethane	1,500	12.50	8.06	3.00	57-10202-47-1	14.67

Capacity listed is for manual operation. For powered operations, consult factory.  
Part Numbers listed are for the swivel caster.  
For rigid casters, change the last digit from 1 to 2 (i.e. 57-08202-60-2).  
Estimated weight is for swivel caster. Deduct 20 percent of swivel caster weight for rigid casters.  
All dimensions are in inches. All weights are in pounds.

CONTINUED

# KINGPINLESS STYLE 57 SERIES

## PRECISION BEARING (Extended Swivel Lead Casters)

Diameter	Width	Material	Capacity	OAH	Swivel Radius	Swivel Lead	Part Number	Weight
6	2.00	T/R Polyurethane	960	8.31	14.07	3.50	<a href="#">57EXT-06202-61-1</a>	6.58
6	2.00	T/R-95 Polyurethane	1,200	8.31	14.07	3.50	<a href="#">57EXT-06202-91-1</a>	6.58
6	2.00	HPPT Polyurethane	1,200	8.31	14.07	3.50	<a href="#">57EXT-06202-90-1</a>	6.58
6	2.00	ErgoTread	910	8.31	11.20	3.50	<a href="#">57EXT-06202-44-1</a>	6.58
6	2.00	T/R Polyurethane	960	8.31	11.20	3.50	<a href="#">57EXT-06202-93-1</a>	6.58
6	2.00	T/R-95 Polyurethane	1,400	8.31	11.20	3.50	<a href="#">57EXT-06202-94-1</a>	6.58
8	2.00	T/R Polyurethane	1,200	10.13	16.94	3.50	<a href="#">57EXT-08202-61-1</a>	7.57
8	2.00	T/R-95 Polyurethane	1,200	10.13	16.94	3.50	<a href="#">57EXT-08202-91-1</a>	7.57
8	2.00	HPPT Polyurethane	1,200	10.13	16.94	3.50	<a href="#">57EXT-08202-90-1</a>	7.57
8	2.00	ErgoTread	1,180	10.13	13.11	3.50	<a href="#">57EXT-08202-44-1</a>	7.57
8	2.00	T/R Polyurethane	1,240	10.13	13.11	3.50	<a href="#">57EXT-08202-93-1</a>	7.57
8	2.00	T/R-95 Polyurethane	1,500	10.13	13.11	3.50	<a href="#">57EXT-08202-94-1</a>	7.57
10	2.00	T/R Polyurethane	1,500	12.50	14.75	3.50	<a href="#">57EXT-10202-61-1</a>	8.56
10	2.00	T/R-95 Polyurethane	1,500	12.50	14.75	3.50	<a href="#">57EXT-10202-91-1</a>	8.56
10	2.00	ErgoTread	1,500	12.50	14.75	3.50	<a href="#">57EXT-10202-44-1</a>	8.56
10	2.00	T/R Polyurethane	1,500	12.50	14.75	3.50	<a href="#">57EXT-10202-93-1</a>	8.56
10	2.00	T/R-95 Polyurethane	1,500	12.50	14.75	3.50	<a href="#">57EXT-10202-94-1</a>	8.56

Capacity listed is for manual operation. For powered operations, consult factory.

Part Numbers listed are for the swivel caster.

For rigid casters, change the last digit from 1 to 2 (i.e. 57-08202-60-2).

Estimated weight is for swivel caster. Deduct 20 percent of swivel caster weight for rigid casters.

All dimensions are in inches. All weights are in pounds.



## HEAVY DUTY 60 SERIES CASTERS