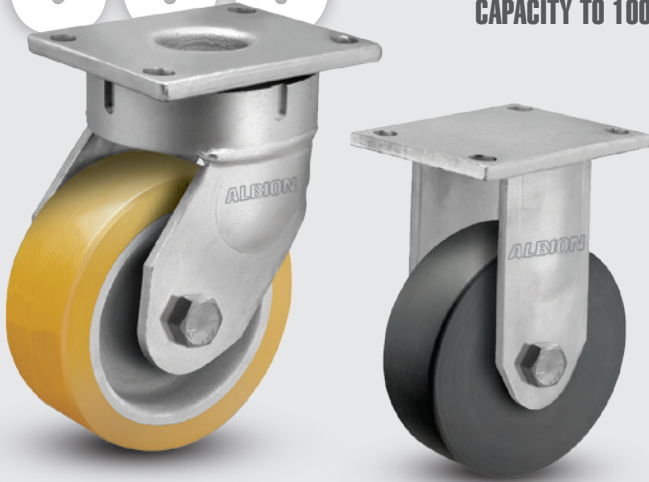


# 600

## Shockmaster™ Kingpinless Casters

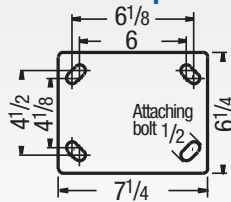
CAPACITY TO 10000



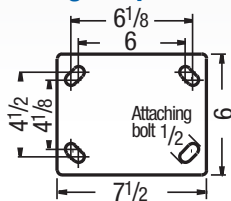
An added step up from the 610 (previous page), constructed of a one-piece forging for ultimate durability and strength. Highly recommended for automotive and aerospace applications. This caster is built to take the punishment of constant swiveling or for service where shock or impact loads would damage less rugged casters.

### MOUNTING OPTIONS

#### Swivel Top Plate



#### Rigid Top Plate



### TYPICAL APPLICATIONS

- Body dolly carts
- Engine dollies
- Material carts
- Chassis rack carts
- Paint line dollies
- Towed trash gondolas

### SWIVEL CROSS SECTION



+ For swivel models add "S", for rigid model add "R" to end of base caster number.

### Moldon Rubber on Cast Iron (09 Tapered Roller Bearing)\*

| MR | Wheel Diameter (Inches) | Tread Width (Inches) | Capacity (Lbs)<br>(Based on nominal operation) | Overall Height (Inches) | Swivel Lead (Inches) | Base Caster Number+ |
|----|-------------------------|----------------------|--|-------------------------|----------------------|---------------------|
|    | 6                       | 2 1/2                | 700  | 8 1/2                   | 2 1/2                | 600MR06409          |
|    | 6                       | 3                    | 750  | 8 1/2                   | 2 1/2                | 600MR06509          |
|    | 8                       | 2 1/2                | 850  | 10 1/2                  | 2 1/2                | 600MR08409          |
|    | 8                       | 2 1/2**              | 850  | 10 1/2                  | 2 1/2                | 600MH08409          |
|    | 8                       | 3                    | 900  | 10 1/2                  | 2 1/2                | 600MR08509          |
|    | 10                      | 3                    | 1000   | 12 1/2                  | 2 1/2                | 600MR10509          |
|    | 10                      | 3**                  | 1000   | 12 1/2                  | 2 1/2                | 600MH10509          |
|    | 10                      | 4                    | 1400   | 12 1/2                  | 2 1/2                | 600MR10709          |
|    | 12                      | 3 1/2                | 1500   | 15 1/2                  | 2 1/2                | 600MR12609          |
|    | 12                      | 4                    | 1600   | 15 1/2                  | 2 1/2                | 600MR12709          |

\*Roller (01) bearings available. Change "09" to "01". Example: 600MR10501.

\*\*Heavy-duty MH version of wheel.



Premium Quality



Towing^



Environmentally Friendly

### FEATURES

- **Top Plate:** 1/2" thick AISI 1045 steel one-piece forging precision machined and for long life
- **Swivel Section:** 3/4" ball bearings mounted in a 4-1/2" precision machined raceway. ZerK in swivel section
- **Legs:** 3/8" thick steel welded to yoke base using 100,000 psi weld filler
- **Axle:** 1" diameter
- Alternate or custom caster configurations available

### RIG OPTIONS

- Spring-loaded, dual wheel models available, consult factory
- Notched yoke base for swivel locks specify **NY600**

### BRAKE OPTIONS

To order, add brake code below to end of model. Example: 600PY08409SP

**Poly Cam** specify **P**



**PLB Integrated** specify **PLB**



**Single Side** specify **SSB610**. **Double Sided** specify **DSB610**



**Face Contact** specify **F**



**Hand Operated Detachable Swivel Lock** specify **L**.



### BEARING OPTIONS



Straight Roller (01)



Tapered Roller (09)



Precision Ball (28)



Radial Ball (27)

+ For swivel models add "S", for rigid model add "R" to end of base caster number.

| Wheel Diameter (Inches) | Tread Width (Inches) | Capacity (Lbs)<br>(Based on nominal operation) | Overall Height (Inches) | Swivel Lead (Inches) | Base Caster Number+ |
|-------------------------|----------------------|--|-------------------------|----------------------|---------------------|
|-------------------------|----------------------|--|-------------------------|----------------------|---------------------|

### Polyurethane on Aluminum (01 Roller Bearing)\*

| PD | Wheel Diameter (Inches) | Tread Width (Inches) | Capacity (Lbs)<br>(Based on nominal operation) | Overall Height (Inches) | Swivel Lead (Inches) | Base Caster Number+ |
|----|-------------------------|----------------------|--|-------------------------|----------------------|---------------------|
|    | 8                       | 2 1/2                | 2010   | 10 1/2                  | 2 1/2                | 600PD08401          |
|    | 8                       | 3                    | 2520   | 10 1/2                  | 2 1/2                | 600PD08501          |
|    | 10                      | 2 1/2                | 2370   | 12 1/2                  | 2 1/2                | 600PD10401          |
|    | 10                      | 3                    | 3000   | 12 1/2                  | 2 1/2                | 600PD10501          |

\*Tapered Roller (09) bearings available. Change "01" to "09". Example: 600PD08409.

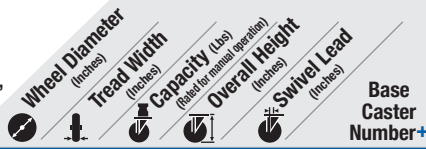
### Polyurethane on Cast Iron (09 Tapered Roller Bearing)\*

| PY | Wheel Diameter (Inches) | Tread Width (Inches) | Capacity (Lbs)<br>(Based on nominal operation) | Overall Height (Inches) | Swivel Lead (Inches) | Base Caster Number+ |
|----|-------------------------|----------------------|--|-------------------------|----------------------|---------------------|
|    | 6                       | 2 1/2                | 1600   | 8 1/2                   | 2 1/2                | 600PY06409          |
|    | 6                       | 3                    | 2000   | 8 1/2                   | 2 1/2                | 600PY06509          |
|    | 8                       | 2 1/2                | 2000   | 10 1/2                  | 2 1/2                | 600PY08409          |
|    | 8                       | 3                    | 2500   | 10 1/2                  | 2 1/2                | 600PY08509          |
|    | 8                       | 4                    | 3800   | 10 1/2                  | 2 1/2                | 600PY08709          |
|    | 10                      | 3                    | 3000   | 12 1/2                  | 2 1/2                | 600PY10509          |
|    | 10                      | 4                    | 4200   | 12 1/2                  | 2 1/2                | 600PY10709          |
|    | 12                      | 3 1/2                | 4110   | 15 1/2                  | 2 1/2                | 600PY12609          |
|    | 12                      | 4                    | 4800   | 15 1/2                  | 2 1/2                | 600PY12709          |

\*Roller (01) bearings available. Change "09" to "01". Example: 600PY06401.

Continue on next page >>

+ For swivel models add "S", for rigid model add "R" to end of base caster number.



| Thick Tread Polyurethane (09 Tapered Roller Bearing)* |                         |                      |  |                         |                      |                     |
|---|-------------------------|----------------------|--|-------------------------|----------------------|---------------------|
| PX  | Wheel Diameter (inches) | Tread Width (inches) | Capacity (lbs) (Based on manual operation) | Overall Height (inches) | Swivel Lead (inches) | Base Caster Number+ |
|   | 6                       | 3                    | 2250                                       | 8 1/2                   | 2 1/2                | 600PX06509          |
|   | 8                       | 3                    | 2780                                       | 10 1/2                  | 2 1/2                | 600PX08509          |
|   | 8                       | 4                    | 3850                                       | 10 1/2                  | 2 1/2                | 600PX08709          |
|   | 10                      | 3                    | 3300                                       | 12 1/2                  | 2 1/2                | 600PX10509          |
|   | 10                      | 4                    | 4620                                       | 12 1/2                  | 2 1/2                | 600PX10709          |
|   | 12                      | 4                    | 5280                                       | 15 1/2                  | 2 1/2                | 600PX12709          |

\*Roller (01) bearings available. Change "09" to "01".  
Example: 600PX10501.

| Vulkollan on Cast Iron (09 Tapered Roller Bearing)* |                         |                      |  |                         |                      |                     |
|---|-------------------------|----------------------|--|-------------------------|----------------------|---------------------|
| VY  | Wheel Diameter (inches) | Tread Width (inches) | Capacity (lbs) (Based on manual operation) | Overall Height (inches) | Swivel Lead (inches) | Base Caster Number+ |
|   | 6                       | 2 1/2                | 2350                                       | 8 1/2                   | 2 1/2                | 600VY06409          |
|   | 6                       | 3                    | 3000                                       | 8 1/2                   | 2 1/2                | 600VY06509          |
|   | 8                       | 2 1/2                | 2900                                       | 10 1/2                  | 2 1/2                | 600VY08409          |
|   | 8                       | 3                    | 4000                                       | 10 1/2                  | 2 1/2                | 600VY08509          |
|   | 10                      | 2 1/2                | 3450                                       | 12 1/2                  | 2 1/2                | 600VY10409          |
|   | 10                      | 3                    | 5000                                       | 12 1/2                  | 2 1/2                | 600VY10509          |

\*Roller (01) bearings available. Change "09" to "01".  
Example: 600VY10501.

| Vulkollan Thick Tread Polyurethane (09 Tapered Roller Bearing)* |                         |                      |  |                         |                      |                     |
|---|-------------------------|----------------------|--|-------------------------|----------------------|---------------------|
| VX  | Wheel Diameter (inches) | Tread Width (inches) | Capacity (lbs) (Based on manual operation) | Overall Height (inches) | Swivel Lead (inches) | Base Caster Number+ |
|   | 6                       | 2 1/2                | 2350                                       | 8 1/2                   | 2 1/2                | 600VX06409          |
|   | 6                       | 3                    | 3000                                       | 8 1/2                   | 2 1/2                | 600VX06509          |
|   | 8                       | 2 1/2                | 2900                                       | 10 1/2                  | 2 1/2                | 600VX08409          |
|   | 8                       | 3                    | 4000                                       | 10 1/2                  | 2 1/2                | 600VX08509          |
|   | 10                      | 2 1/2                | 3450                                       | 12 1/2                  | 2 1/2                | 600VX10409          |
|   | 10                      | 3                    | 5000                                       | 12 1/2                  | 2 1/2                | 600VX10509          |

\*Roller (01) bearings available. Change "09" to "01".  
Example: 600VX10501.

| X-treme Plus Solid Polyurethane (01 Roller Bearing)* |                         |                      |  |                         |                      |                     |
|--|-------------------------|----------------------|--|-------------------------|----------------------|---------------------|
| XP   | Wheel Diameter (inches) | Tread Width (inches) | Capacity (lbs) (Based on manual operation) | Overall Height (inches) | Swivel Lead (inches) | Base Caster Number+ |
|  | 8                       | 2 1/2                | 2000                                       | 10 1/2                  | 2 1/2                | 600XP08401          |
|  | 8                       | 3                    | 2000                                       | 10 1/2                  | 2 1/2                | 600XP08501          |
|  | 10                      | 3                    | 2500                                       | 12 1/2                  | 2 1/2                | 600XP10501          |

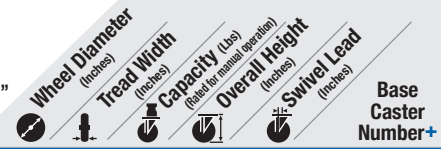
\*Precision Ball (28) bearings available. Change "01" to "28".

| Phenolic (01 Roller Bearing)* |                         |                      |  |                         |                      |                     |
|-------------------------------|-------------------------|----------------------|--|-------------------------|----------------------|---------------------|
| TM                            | Wheel Diameter (inches) | Tread Width (inches) | Capacity (lbs) (Based on manual operation) | Overall Height (inches) | Swivel Lead (inches) | Base Caster Number+ |
|                               | 6                       | 2 1/2                | 1600                                       | 8 1/2                   | 2 1/2                | 600TM06401          |
|                               | 6                       | 3                    | 2000                                       | 8 1/2                   | 2 1/2                | 600TM06501          |
|                               | 8                       | 2 1/2                | 2000                                       | 10 1/2                  | 2 1/2                | 600TM08401          |
|                               | 8                       | 3                    | 2500                                       | 10 1/2                  | 2 1/2                | 600TM08501          |
|                               | 10                      | 3                    | 2900                                       | 12 1/2                  | 2 1/2                | 600TM10501          |
|                               | 12                      | 3 1/2                | 4000                                       | 15 1/2                  | 2 1/2                | 600TM12601          |
|                               | 12                      | 4                    | 8000                                       | 15 1/2                  | 2 1/2                | 600TM12701          |

\*Tapered Roller (09) bearings available. Change "01" to "09".  
Example: 600TM10509.

| Trionix™ High Impact Polymer (28 Precision Ball Bearing) |                         |                      |  |                         |                      |                     |
|--|-------------------------|----------------------|--|-------------------------|----------------------|---------------------|
| NX   | Wheel Diameter (inches) | Tread Width (inches) | Capacity (lbs) (Based on manual operation) | Overall Height (inches) | Swivel Lead (inches) | Base Caster Number+ |
|  | 6                       | 2 1/2                | 7200                                       | 8 1/2                   | 2 1/2                | 600NX06428          |
|  | 6                       | 3                    | 7200                                       | 8 1/2                   | 2 1/2                | 600NX06528          |
|  | 8                       | 2 1/2                | 7200                                       | 10 1/2                  | 2 1/2                | 600NX08428          |
|  | 8                       | 3                    | 7200                                       | 10 1/2                  | 2 1/2                | 600NX08528          |
|  | 10                      | 2 1/2                | 7200                                       | 12 1/2                  | 2 1/2                | 600NX10428          |
|  | 10                      | 3                    | 7200                                       | 12 1/2                  | 2 1/2                | 600NX10528          |

+ For swivel models add "S", for rigid model add "R" to end of base caster number.



| Cast Iron (01 Roller Bearing)* |                         |                      |  |                         |                      |                     |
|--------------------------------|-------------------------|----------------------|--|-------------------------|----------------------|---------------------|
| CA                             | Wheel Diameter (inches) | Tread Width (inches) | Capacity (lbs) (Based on manual operation) | Overall Height (inches) | Swivel Lead (inches) | Base Caster Number+ |
|                                | 6                       | 3                    | 2800                                       | 8 1/2                   | 2 1/2                | 600CA06501          |
|                                | 8                       | 2 1/2                | 2300                                       | 10 1/2                  | 2 1/2                | 600CA08401          |
|                                | 8                       | 3                    | 2800                                       | 10 1/2                  | 2 1/2                | 600CA08501          |
|                                | 8                       | 4                    | 4000                                       | 10 1/2                  | 2 1/2                | 600CA08701          |
|                                | 10                      | 3                    | 2800                                       | 12 1/2                  | 2 1/2                | 600CA10501          |
|                                | 10                      | 4                    | 4000                                       | 12 1/2                  | 2 1/2                | 600CA10701          |

\*Tapered Roller (09) bearings available. Change "01" to "09".  
Example: 600CA10509.

| V-Grooved Cast Iron (01 Roller Bearing)* |                         |                      |  |                         |                      |                     |
|--|-------------------------|----------------------|--|-------------------------|----------------------|---------------------|
| VG                                       | Wheel Diameter (inches) | Tread Width (inches) | Capacity (lbs) (Based on manual operation) | Overall Height (inches) | Swivel Lead (inches) | Base Caster Number+ |
|  | 6                       | 2 1/2                | 2500                                       | 8 1/2                   | 2 1/2                | 600VG06401          |
|  | 8                       | 2 1/2                | 2500                                       | 10 1/2                  | 2 1/2                | 600VG08401          |
|  | 8                       | 3                    | 2500                                       | 10 1/2                  | 2 1/2                | 600VG08501          |

\*Tapered Roller (09) bearings available. Change "01" to "09".  
Example: 600VG06409.

| Drop Forged V-Grooved Cast Iron (01 Roller Bearing)* |                         |                      |  |                         |                      |                     |
|--|-------------------------|----------------------|--|-------------------------|----------------------|---------------------|
| VF   | Wheel Diameter (inches) | Tread Width (inches) | Capacity (lbs) (Based on manual operation) | Overall Height (inches) | Swivel Lead (inches) | Base Caster Number+ |
|  | 6                       | 3                    | 6000                                       | 8 1/2                   | 2 1/2                | 600VF06501          |
|  | 8                       | 4                    | 8350                                       | 10 1/2                  | 2 1/2                | 600VF08701          |
|  | 10                      | 4                    | 8350                                       | 12 1/2                  | 2 1/2                | 600VF08701          |

\*Tapered Roller (09) bearings available. Change "01" to "09".  
Example: 600VF06509.  
Note: Capacity increases to 10000 lbs. if specifying tapered roller bearing.

| Drop Forged Steel (01 Roller Bearings)* |                         |                      |  |                         |                      |                     |
|---|-------------------------|----------------------|--|-------------------------|----------------------|---------------------|
| FS                                      | Wheel Diameter (inches) | Tread Width (inches) | Capacity (lbs) (Based on manual operation) | Overall Height (inches) | Swivel Lead (inches) | Base Caster Number+ |
|   | 6                       | 2 1/2                | 4000                                       | 8 1/2                   | 2 1/2                | 600FS06401          |
|   | 8                       | 2 1/2                | 4000                                       | 10 1/2                  | 2 1/2                | 600FS08401          |
|   | 8                       | 3                    | 4500                                       | 10 1/2                  | 2 1/2                | 600FS08501          |
|   | 10                      | 3                    | 5000                                       | 12 1/2                  | 2 1/2                | 600FS10501          |
|   | 10                      | 4                    | 8350                                       | 12 1/2                  | 2 1/2                | 600FS10701          |

\*Tapered Roller (09) bearings available. Change "01" to "09".  
Example: 600FS10509. 6x2-1/2 capacity increases to 5000, 8x3 capacity increases to 5500, 10x3 capacity increases to 6000, 10x4 capacity increases to 10,000 with use of 09 bearing.

| Heavy Duty Drop Forged Steel (01 Roller Bearings)* |                         |                      |  |                         |                      |                     |
|--|-------------------------|----------------------|--|-------------------------|----------------------|---------------------|
| FH   | Wheel Diameter (inches) | Tread Width (inches) | Capacity (lbs) (Based on manual operation) | Overall Height (inches) | Swivel Lead (inches) | Base Caster Number+ |
|  | 8                       | 3                    | 6500                                       | 10 1/2                  | 2 1/2                | 600FH08501          |
|  | 10                      | 3                    | 6000                                       | 12 1/2                  | 2 1/2                | 600FH10501          |

\*Tapered Roller (09) bearings available. Change "01" to "09".  
Example: 600FH10509. 10x3 capacity increases to 6500 with use of 09 bearing.

| Ductile Iron Crowned Tread (01 Roller Bearing)* |                         |                      |  |                         |                      |                     |
|---|-------------------------|----------------------|--|-------------------------|----------------------|---------------------|
| FR, FM, VM                                      | Wheel Diameter (inches) | Tread Width (inches) | Capacity (lbs) (Based on manual operation) | Overall Height (inches) | Swivel Lead (inches) | Base Caster Number+ |
|   | 6                       | 2 1/2                | 3500                                       | 8 1/2                   | 2 1/2                | 600FR06401          |
|   | 6                       | 3                    | 6000                                       | 8 1/2                   | 2 1/2                | 600FR06501          |
|   | 8                       | 3                    | 6000                                       | 10 1/2                  | 2 1/2                | 600FR08501          |
|   | 10                      | 3                    | 6000                                       | 12 1/2                  | 2 1/2                | 600FR10501          |

\*Tapered Roller (09) available. Change "01" to "09". Example: 600FR08509.  
Ductile Iron Flat Tread (FM) and V-Groove (VM) models available. Change FR wheel code to FM or VM. Example: 600FM08501.

600 SERIES • CAPACITY TO 10000

HEAVY DUTY KINGPINLESS