

# KINGPINLESS STYLE 71 SERIES



## FEATURES

**Swivel Section:** High alloy steel swivel section features a precision machined and through hardened 3-1/4" diameter raceway.

**Legs:** 5/16" x 3" legs are formed and continuously welded inside and outside to the yoke base.

**Kingpin:** Kingpinless style design.

**Axle:** 3/4" bolt and locking nut.

**Lubrication:** Pre-lubricated before shipping.

**Wheels:** 4" to 12" wheels are available.

**Finish:** Clear zinc plating.

## APPLICATIONS

Suited for medium duty towing applications where shock loads are present. In addition, they may be used for dough troughs, high capacity die tables, machinery dollies, corrugated steel box trucks, heavy portable storage racks, mobile military equipment, aircraft maintenance stands, and aircraft crew stairs.

## BENEFITS

The 71 Series is our heaviest offering in the fabricated single ball race caster. These swivel bearings act as both load and thrust components and lock the swivel section together to distribute the load over a larger area. Because of the unique fabrication of the swivel section, various top plate options can be utilized.

## OPTIONS

### BRAKES

Poly Lock: ..... P\*  
 Wrap Around: ..... W\*  
 Dual Side: ..... DS  
 Single Side: ..... SS  
 Face Contact: ..... F

### SWIVEL LOCKS

Factory Installed: ..... L  
 Demountable: ..... DL  
 Foot Actuated: ..... KL  
 Passive: ..... PL

SEALED SWIVEL SECTION ..... SSW

SEALED WHEELS ..... SW

TOE GUARD ..... TG

\* For wheels with a diameter > 6"  
 ^ Only available on roller bearing wheels.

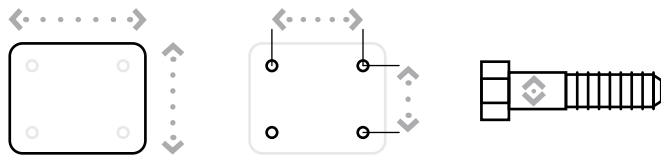
# KINGPINLESS STYLE 71 SERIES

## STRAIGHT ROLLER BEARING

Diameter	Width	Material	Capacity	OAH	Swivel Radius	Swivel Lead	Part Number	Weight
4	3.00	Cast Iron	2,000	6.00	4.27	2.00	71-04301-10-1	20.00
4	3.25	Standard Polyurethane	1,200	6.00	4.32	2.00	71-04321-60-1	17.00
5	2.50	Cast Iron	2,000	7.00	4.91	2.25	71-05251-10-1	24.00
5	3.00	Standard Polyurethane	1,550	7.00	4.98	2.25	71-05301-60-1	23.00
6	2.50	Cast Iron	2,500	8.00	5.40	2.25	71-06251-10-1	27.00
6	2.50	Forged Steel	4,000	8.00	5.40	2.25	71-06251-20-1	25.00
6	3.00	Cast Iron	2,500	8.00	5.46	2.25	71-06301-10-1	25.00
6	3.00	Phenolic Resin	2,000	8.00	5.46	2.25	71-06301-30-1	19.00
6	3.00	Standard Polyurethane	2,050	8.00	5.46	2.25	71-06301-60-1	21.00
6	3.00	H.D. Standard Polyurethane	2,450	8.00	5.46	2.25	71-06301-65-1	23.00
6	3.00	H.D. T/R Polyurethane	2,050	8.00	5.46	2.25	71-06301-66-1	23.00
6	3.00	Mold On Rubber	675	8.00	5.46	2.25	71-06301-70-1	24.00
8	3.00	Cast Iron	3,500	10.50	6.67	2.50	71-08301-10-1	34.00
8	3.00	Forged Steel	4,500	10.50	6.67	2.50	71-08301-20-1	34.00
8	3.00	Phenolic Resin	2,500	10.50	6.67	2.50	71-08301-30-1	22.00
8	3.00	Standard Polyurethane	2,500	10.50	6.67	2.50	71-08301-60-1	30.00
8	3.00	H.D. Standard Polyurethane	3,100	10.50	6.67	2.50	71-08301-65-1	34.00
8	3.00	H.D. T/R Polyurethane	2,500	10.50	6.67	2.50	71-08301-66-1	34.00
8	3.00	Mold On Rubber	840	10.50	6.67	2.50	71-08301-70-1	27.00
10	3.00	Cast Iron	3,500	12.50	8.14	3.00	71-10301-10-1	40.00
10	3.00	Forged Steel	4,500	12.50	8.14	3.00	71-10301-20-1	43.00
10	3.00	Phenolic Resin	2,900	12.50	8.14	3.00	71-10301-30-1	25.00
10	3.00	Standard Polyurethane	3,000	12.50	8.14	3.00	71-10301-60-1	35.00
10	3.00	H.D. Standard Polyurethane	3,500	12.50	8.14	3.00	71-10301-65-1	40.00
10	3.00	H.D. T/R Polyurethane	2,750	12.50	8.14	3.00	71-10301-66-1	40.00
12	3.00	Phenolic Resin	3,500	15.50	9.12	3.00	71-12301-30-1	30.00
12	3.00	Standard Polyurethane	3,500	15.50	9.12	3.00	71-12301-60-1	25.00
12	3.00	Mold On Rubber	1,125	15.50	9.12	3.00	71-12301-70-1	25.00

### MAXIMUM CAPACITY

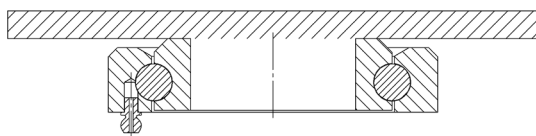
# 4,500 lbs.



Top Plate Size	Bolt Hole Spacing	Bolt Diameter
Standard: 5" x 7.25"	3.375" x 5.25" Slotted to 4.125" x 6.125"	0.5"
Optional Top Plate 60: 4.5" x 6.25"	2.438" x 4.938" Slotted to 3.375" x 5.25"	0.5"
Optional Top Plate 75: 6" x 7"	4.625" x 5.5"	0.5"
Optional Top Plate 80: 6" x 7.5"	4.5" x 6"	0.5"

Note: OT 80 will increase OAH by 1/8"

### 71 SERIES TOP PLATE



Part Numbers listed are for the swivel casters.

For rigid casters, change series to 70 and change the last digit from 1 to 2 (i.e. 70-06301-60-2)

\*These casters have precision ball bearings.

Capacity listed is for manual operation. For powered operations, consult factory.

Estimated weight is for swivel caster. Deduct 20 percent of swivel caster weight for rigid casters.

All dimensions are in inches. All weights are in pounds.

CONTINUED

# KINGPINLESS STYLE 71 SERIES

## PRECISION BEARING

Diameter	Width	Material	Capacity	OAH	Swivel Radius	Swivel Lead	Part Number	Weight
5	2.50	Cast Iron	2,000	7.00	4.91	2.25	<a href="#">71-05259-10-1</a>	24.00
5	3.00	Standard Polyurethane	1,550	7.00	4.98	2.25	<a href="#">71-05309-60-1</a>	23.00
6	2.50	Cast Iron	2,500	8.00	5.40	2.25	<a href="#">71-06259-10-1</a>	27.00
6	2.50	Forged Steel	4,000	8.00	5.40	2.25	<a href="#">71-06259-20-1</a>	25.00
6	3.00	Cast Iron	2,500	8.00	5.46	2.25	<a href="#">71-06309-10-1</a>	25.00
6	3.00	Phenolic Resin	2,000	8.00	5.46	2.25	<a href="#">71-06309-30-1</a>	19.00
6	3.00	Standard Polyurethane	2,050	8.00	5.46	2.25	<a href="#">71-06309-60-1</a>	21.00
6	3.00	T/R Polyurethane	1,640	8.00	5.46	2.25	<a href="#">71-06302-61-1*</a>	21.00
6	3.00	H.D. Standard Polyurethane	2,450	8.00	5.46	2.25	<a href="#">71-06309-65-1</a>	23.00
6	3.00	H.D. T/R Polyurethane	2,050	8.00	5.46	2.25	<a href="#">71-06309-66-1</a>	23.00
6	3.00	Mold On Rubber	675	8.00	5.46	2.25	<a href="#">71-06309-70-1</a>	24.00
8	3.00	Cast Iron	3,500	10.50	6.67	2.50	<a href="#">71-08309-10-1</a>	34.00
8	3.00	Forged Steel	4,500	10.50	6.67	2.50	<a href="#">71-08309-20-1</a>	34.00
8	3.00	Phenolic Resin	2,500	10.50	6.67	2.50	<a href="#">71-08309-30-1</a>	22.00
8	3.00	Standard Polyurethane	2,500	10.50	6.67	2.50	<a href="#">71-08309-60-1</a>	30.00
8	3.00	T/R Polyurethane	2,000	10.50	6.67	2.50	<a href="#">71-08302-61-1*</a>	30.00
8	3.00	H.D. Standard Polyurethane	3,100	10.50	6.67	2.50	<a href="#">71-08309-65-1</a>	34.00
8	3.00	H.D. T/R Polyurethane	2,500	10.50	6.67	2.50	<a href="#">71-08309-66-1</a>	34.00
8	3.00	Mold On Rubber	840	10.50	6.67	2.50	<a href="#">71-08309-70-1</a>	27.00
10	3.00	Cast Iron	3,500	12.50	8.14	3.00	<a href="#">71-10309-10-1</a>	40.00
10	3.00	Forged Steel	4,500	12.50	8.14	3.00	<a href="#">71-10309-20-1</a>	43.00
10	3.00	Phenolic Resin	2,900	12.50	8.14	3.00	<a href="#">71-10309-30-1</a>	25.00
10	3.00	Standard Polyurethane	3,000	12.50	8.14	3.00	<a href="#">71-10309-60-1</a>	35.00
10	3.00	T/R Polyurethane	2,400	12.50	8.14	3.00	<a href="#">71-10302-61-1*</a>	35.00
10	3.00	H.D. Standard Polyurethane	3,500	12.50	8.14	3.00	<a href="#">71-10309-65-1</a>	40.00
10	3.00	H.D. T/R Polyurethane	2,750	12.50	8.14	3.00	<a href="#">71-10309-66-1</a>	40.00
12	3.00	Phenolic Resin	3,500	15.50	9.12	3.00	<a href="#">71-12309-30-1</a>	30.00
12	3.00	Standard Polyurethane	3,500	15.50	9.12	3.00	<a href="#">71-12309-60-1</a>	25.00
12	3.00	Mold On Rubber	1,125	15.50	9.12	3.00	<a href="#">71-12309-70-1</a>	25.00

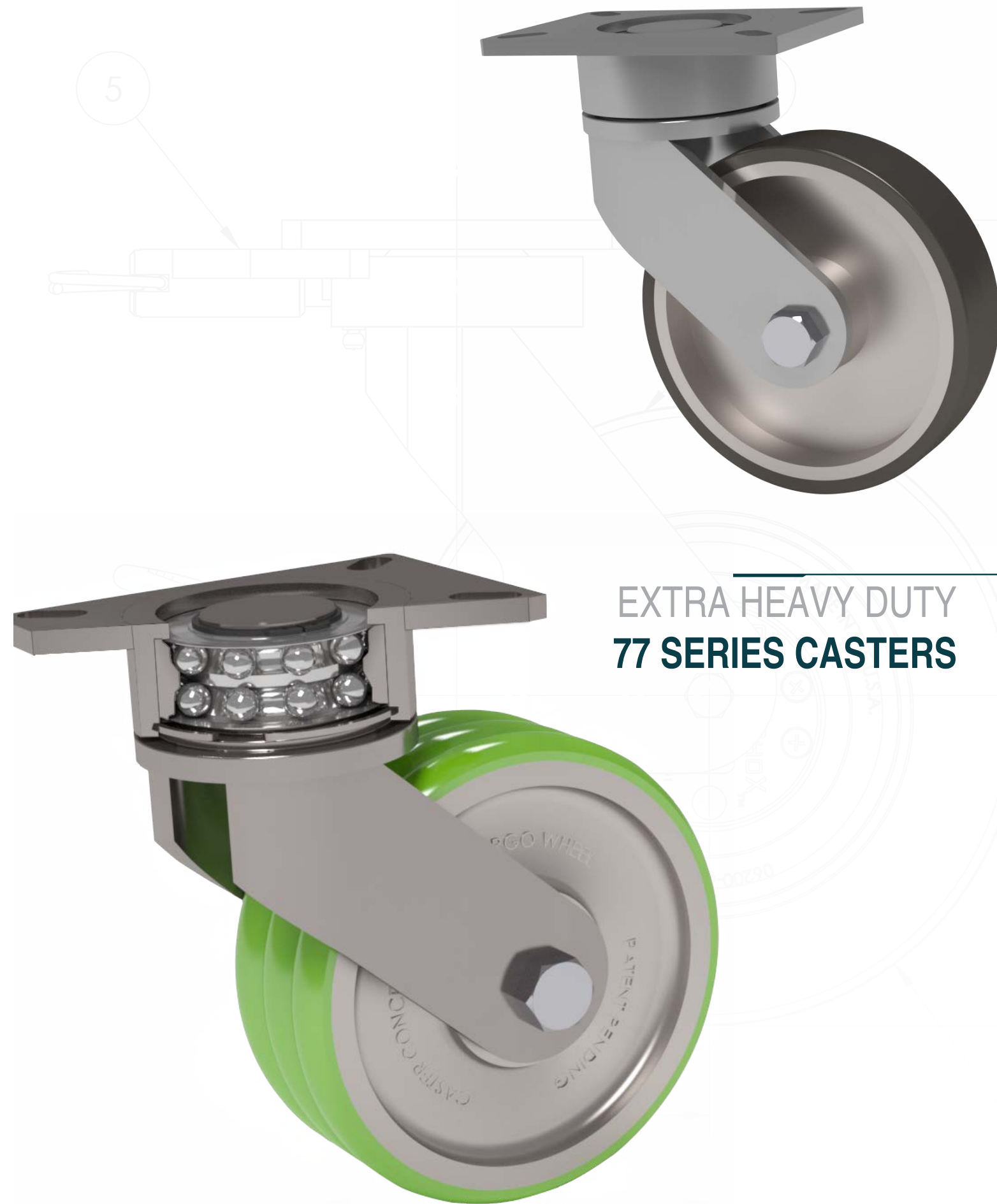
\*These casters have precision ball bearings.

Capacity listed is for manual operation. For powered operations, consult factory.

Part Numbers listed are for the swivel casters. For rigid casters, change series to 70 and change the last digit from 1 to 2 (i.e. 70-06301-60-2)

Estimated weight is for swivel caster. Deduct 20 percent of swivel caster weight for rigid casters.

All dimensions are in inches. All weights are in pounds.



## EXTRA HEAVY DUTY 77 SERIES CASTERS