

EXTRA HEAVY DUTY 87 SERIES



FEATURES

- Swivel Section:** Sealed precision ball bearing with hardened raceways and neoprene seals.
- Legs:** 3/8" x 3" steel, formed and continuously welded on the inside and outside to the yoke base.
- Kingpin:** 1" Alloy Steel Kingpin.
- Axle:** 1" Diameter Axle.
- Lubrication:** Sealed ball bearing is lubricated and requires zero maintenance.
- Wheels:** 6" to 12" diameter wheels.
- Finish:** Gold Powder Coat.

APPLICATIONS

Suitable for power drawn applications, Automated Guided Vehicles (AGV's), aircraft wing and spar tooling, material carts, chassis rack carts, and aircraft maintenance stands.

BENEFITS

The 87 Series is maintenance free with its sealed precision ball bearing in the swivel section and in the wheels. The smooth rotation and extended lead help lower ergonomic forces.

OPTIONS

BRAKES

- Poly Lock: P*
- Face Contact: F

SWIVEL LOCKS

- Factory Installed: L
- Demountable: DL
- Foot Actuated: KL

- TOE GUARD** TG

* For wheels with a diameter > 6"
Contact the factory for special overall heights and finishes.
DUAL WHEEL DESIGN AVAILABLE

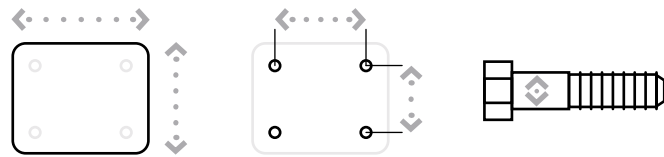
EXTRA HEAVY DUTY 87 SERIES

PRECISION BALL BEARING

Diameter	Width	Material	Capacity	OAH	Swivel Radius	Swivel Lead	Part Number	Weight
6	3.00	T/R Polyurethane	1,640	9.50	6.18	3.00	87-06302-61-1	36.59
6	3.00	T/R-95 Polyurethane	2,070	9.50	6.18	3.00	87-06302-91-1	36.59
6	3.00	HPPT Polyurethane	2,300	9.50	6.18	3.00	87-06302-90-1	36.59
6	3.00	T/R Polyurethane	1,640	9.50	6.18	3.00	87-06302-93-1	29.18
6	3.00	T/R-95 Polyurethane	2,070	9.50	6.18	3.00	87-06302-94-1	29.18
8	3.00	T/R Polyurethane	2,000	11.50	7.16	3.00	87-08302-61-1	41.83
8	3.00	T/R-95 Polyurethane	2,800	11.50	7.16	3.00	87-08302-91-1	41.83
8	3.00	HPPT Polyurethane	3,100	11.50	7.16	3.00	87-08302-90-1	41.83
8	3.00	T/R Polyurethane	2,000	11.50	7.16	3.00	87-08302-93-1	31.97
8	3.00	T/R-95 Polyurethane	2,800	11.50	7.16	3.00	87-08302-94-1	31.97
10	3.00	T/R Polyurethane	2,400	13.50	8.14	3.00	87-10302-61-1	47.07
10	3.00	T/R-95 Polyurethane	3,100	13.50	8.14	3.00	87-10302-91-1	47.07
10	3.00	HPPT Polyurethane	3,450	13.50	8.14	3.00	87-10302-90-1	47.07
10	3.00	T/R Polyurethane	2,400	13.50	8.14	3.00	87-10302-93-1	33.78
10	3.00	T/R-95 Polyurethane	3,100	13.50	8.14	3.00	87-10302-94-1	33.78
12	3.00	T/R Polyurethane	2,800	15.75	9.12	3.00	87-12302-61-1	54.09
12	3.00	T/R-95 Polyurethane	3,400	15.75	9.12	3.00	87-12302-91-1	54.09
12	3.00	HPPT Polyurethane	3,800	15.75	9.12	3.00	87-12302-90-1	54.09
12	3.00	T/R Polyurethane	2,800	15.75	9.12	3.00	87-12302-93-1	37.34
12	3.00	T/R-95 Polyurethane	3,400	15.75	9.12	3.00	87-12302-94-1	37.34

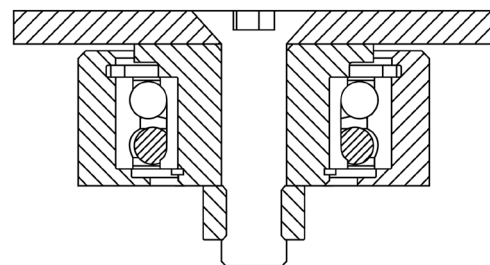
MAXIMUM CAPACITY

5,000 lbs.



Top Plate Size	Bolt Hole Spacing	Bolt Diameter
Standard: 6" x 7.5"	4.5" x 6"	0.5"

87 SERIES TOP PLATE



Capacity listed is for manual operation. For powered operations, consult factory.
Part Numbers listed are for the swivel casters. For rigid casters, change series to 80 and change the last digit from 1 to 2 (i.e. 87-12409-70-2)
Estimated weight is for swivel caster. Deduct 20 percent of swivel caster weight for rigid casters.
All dimensions are in inches. All weights are in pounds.