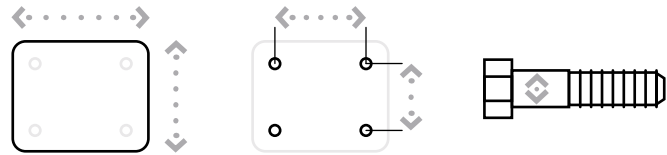


EXTRA HEAVY DUTY 90 SERIES



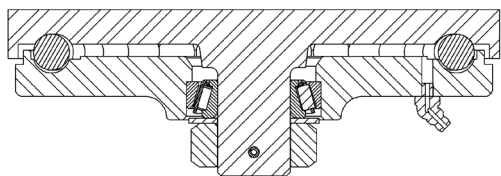
MAXIMUM CAPACITY

8,000 lbs.



Top Plate Size	Bolt Hole Spacing	Bolt Diameter
Standard: 8.5" x 8.5"	7" x 7"	.625"

90 SERIES TOP PLATE



FEATURES

Swivel Section: Constructed of hot forged C-1045 steel with a 7" diameter machined load raceway featuring 5/8" diameter ball bearings with 1-1/4" tapered thrust bearing.

Legs: 1/2" x 4" legs formed and continuously welded both inside and outside for greater strength.

Kingpin: 1-1/4" integrally forged kingpin with slotted adjusting nut.

Axle: 1-1/4", Grade 5.

Lubrication: Pre-lubricated before shipping.

Wheels: 6" to 18" diameter wheels, 3" to 5" widths.

Finish: Gold Powder Coat.

APPLICATIONS

The 90 Series are used for power drawn equipment, stamping racks, trash gondolas, material delivery trailers, and towed trailers. These casters are also widely used on aircraft ground support equipment, in automotive plants and within steel mills.

BENEFITS

The 90 Series bearing raceways are precision machined and then through hardened to eliminate brinelling of the surface when the caster is subjected to shock loads. A 1-1/4" tapered thrust bearing completes the precision fit of the raceway. This caster provides high load capacity at a good value.

OPTIONS

BRAKES

Poly Lock: P*
 Wrap Around: W*
 Face Contact: F

SWIVEL LOCKS

Factory Installed: L
 Heavy Duty Demountable: DHDL
 Heavy Duty: HDL
 Foot Actuated: KL
 Demountable: DL

SEALED SWIVEL SECTION SSW

SEALED WHEELS SW

TOE GUARD TG

* For wheels with a diameter > 6"
 Contact the factory for special overall heights and finishes.
 DUAL WHEEL DESIGN AVAILABLE

EXTRA HEAVY DUTY 90 SERIES

STRAIGHT ROLLER BEARING

Diameter	Width	Material	Capacity	OAH	Swivel Radius	Swivel Lead	Part Number	Weight
6	3.00	Forged Steel	5,500	9.00	5.46	2.25	90-06301-20-1	60.00
6	4.00	H.D. Standard Polyurethane	3,000	9.00	5.61	2.25	90-06401-65-1	50.00
8	3.00	H.D. Cast Iron	4,500	11.00	6.43	2.25	90-08301-11-1	65.00
8	4.00	Forged Steel	8,000	11.00	6.56	2.25	90-08401-20-1	73.00
8	4.00	Standard Polyurethane	3,800	11.00	6.56	2.25	90-08401-60-1	63.00
10	3.00	H.D. Forged Steel	6,000	13.00	7.65	2.50	90-10301-21-1	62.00
10	3.00	Cast Iron	4,000	13.00	7.65	2.50	90-10301-11-1	61.00
10	4.00	Forged Steel	8,000	13.00	7.76	2.50	90-10401-20-1	83.00
10	4.00	Standard Polyurethane	4,200	13.00	7.76	2.50	90-10401-60-1	59.00
10	4.00	H.D. Polyurethane	5,000	13.00	7.76	2.50	90-10401-65-1	68.00
10	4.00	Mold On Rubber	1,500	13.00	7.76	2.50	90-10401-70-1	66.00
10	5.00	H.D. Standard Polyurethane	6,000	13.00	7.91	2.50	90-10501-65-1	68.00
10	5.00	H.D. Hard Polyurethane (70D)	7,200	13.00	7.91	2.50	90-10501-67-1	68.00
12	3.00	H.D. Standard Polyurethane	3,850	15.50	8.68	2.50	90-12301-65-1	57.00
12	3.50	Phenolic Resin	4,000	15.50	8.68	2.50	90-12351-30-1	60.00
12	3.50	Mold On Rubber	1,350	15.50	8.68	2.50	90-12351-70-1	63.00
12	4.00	H.D. Standard Polyurethane	5,500	15.50	8.73	2.50	90-12401-65-1	75.00
12	4.00	H.D. T/R Polyurethane	3,800	15.50	8.73	2.50	90-12401-66-1	75.00
12	4.00	H.D. Hard Polyurethane (70D)	6,600	15.50	8.73	2.50	90-12401-67-1	75.00
12	4.00	Mold On Rubber	1,600	15.50	8.73	2.50	90-12401-70-1	71.00
12	4.00	Ductile Iron	7,500	15.50	8.73	2.50	90-12401-12-1	90.00
12	5.00	H.D. Standard Polyurethane	6,250	15.50	8.86	2.50	90-12501-65-1	90.00
12	5.00	H.D. Hard Polyurethane (70D)	7,500	15.50	8.86	2.50	90-12501-67-1	90.00
12	5.00	Mold On Rubber	1,850	15.50	8.86	2.50	90-12501-70-1	88.00
12	5.00	Ductile Iron	8,000	15.50	8.86	2.50	90-12501-12-1	120.00
16	4.00	Laminated Phenolic	8,000	19.00	11.18	3.00	90-16401-35-1	80.00
16	4.00	Cast Iron	5,900	19.00	11.18	3.00	90-16401-10-1	105.00
16	4.00	H.D. Standard Polyurethane	5,900	19.00	11.18	3.00	90-16401-65-1	109.00
16	4.00	Mold On Rubber	5,900	19.00	11.18	3.00	90-16401-70-1	106.00
16	5.00	H.D. Standard Polyurethane	5,900	19.00	11.28	3.00	90-16501-65-1	115.00
16	5.00	H.D. Hard Polyurethane (70D)	5,900	19.00	11.28	3.00	90-16501-67-1	115.00
18	5.00	H.D. Standard Polyurethane	5,900	21.00	13.24	4.00	90-18501-65-1	115.00
18	5.00	H.D. Hard Polyurethane (70D)	5,900	21.00	13.24	4.00	90-18501-67-1	115.00

Capacity listed is for manual operation. For powered operations, consult factory.
 Part Numbers listed are for the swivel casters. For rigid casters, change the last digit from 1 to 2 (i.e. 90-10309-70-2)
 Estimated weight is for swivel caster. Deduct 15 pounds for rigid casters.
 All dimensions are in inches. All weights are in pounds.

CONTINUED

EXTRA HEAVY DUTY 90 SERIES

PRECISION TAPERED BEARING

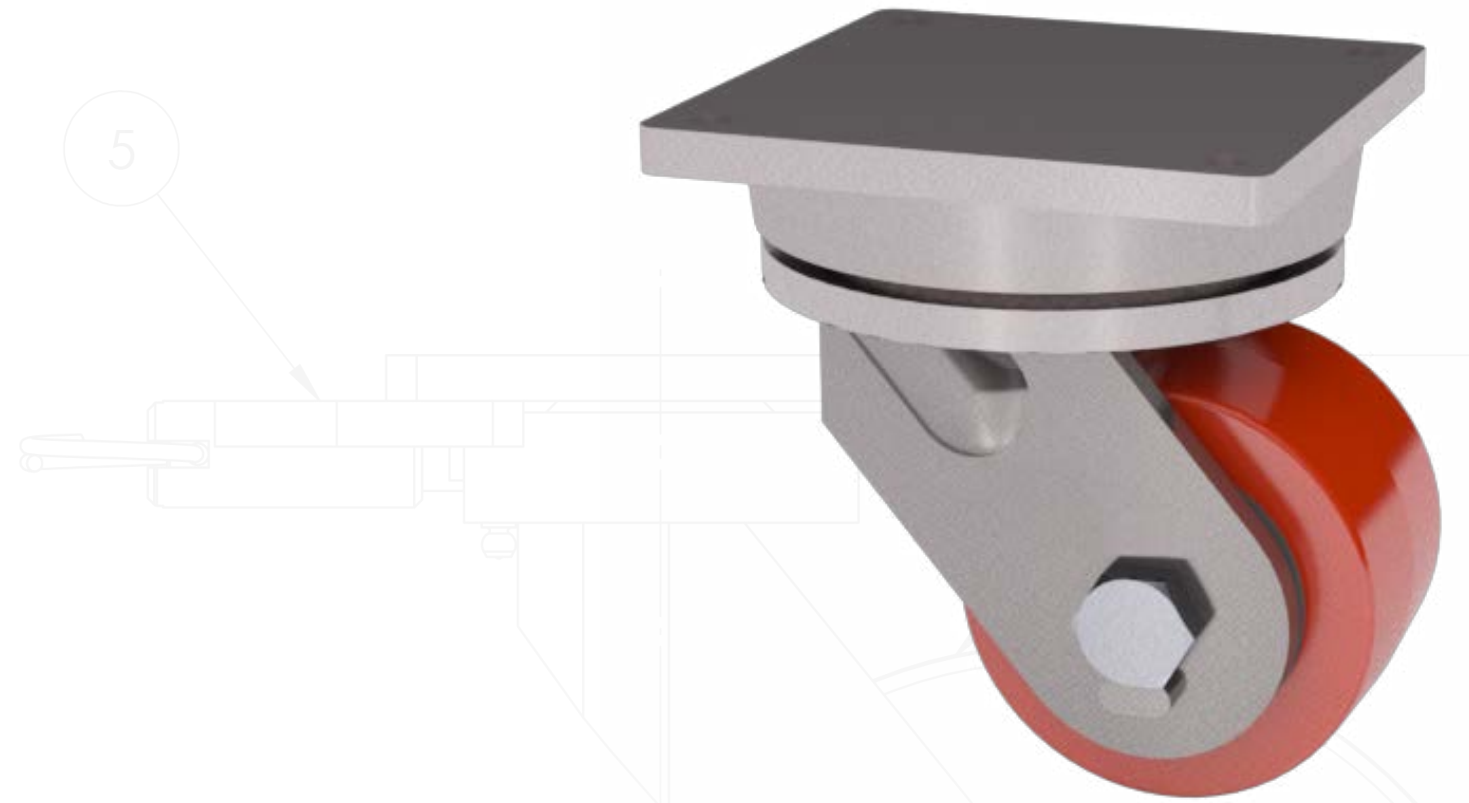
Diameter	Width	Material	Capacity	OAH	Swivel Radius	Swivel Lead	Part Number	Weight
6	3.00	Forged Steel	8,000	9.00	5.46	2.25	90-06309-20-1	60.00
6	3.00	H.D. Forged Steel	8,000	9.00	5.46	2.25	90-06309-21-1	60.00
6	3.00	Standard Polyurethane	2,500	9.00	5.46	2.25	90-06309-60-1	50.00
6	4.00	H.D. Standard Polyurethane	3,000	9.00	5.61	2.25	90-06409-65-1	50.00
8	3.00	Polyurethane	2,500	11.00	6.43	2.25	90-08309-60-1	50.00
8	3.00	H.D. Cast Iron	4,500	11.00	6.43	2.25	90-08309-11-1	65.00
8	4.00	Forged Steel	8,000	11.00	6.56	2.25	90-08409-20-1	73.00
8	4.00	H.D. Forged Steel	8,000	11.00	6.56	2.25	90-08409-21-1	73.00
8	4.00	Standard Polyurethane	3,800	11.00	6.56	2.25	90-08409-60-1	63.00
10	3.00	H.D. Forged Steel	6,500	13.00	7.65	2.50	90-10309-21-1	62.00
10	3.00	Cast Iron	4,000	13.00	7.65	2.50	90-10309-11-1	61.00
10	3.00	H.D. Standard Polyurethane	3,700	13.00	7.65	2.50	90-10309-65-1	51.00
10	4.00	Forged Steel	8,000	13.00	7.76	2.50	90-10409-20-1	83.00
10	4.00	H.D. Forged Steel	8,000	13.00	7.76	2.50	90-10409-21-1	83.00
10	4.00	Standard Polyurethane	4,200	13.00	7.76	2.50	90-10409-60-1	59.00
10	4.00	H.D. Polyurethane	5,000	13.00	7.76	2.50	90-10409-65-1	68.00
10	4.00	Mold On Rubber	1,500	13.00	7.76	2.50	90-10409-70-1	66.00
10	5.00	H.D. Standard Polyurethane	6,000	13.00	7.91	2.50	90-10509-65-1	68.00
10	5.00	H.D. Hard Polyurethane (70D)	7,200	13.00	7.91	2.50	90-10509-67-1	68.00
12	3.00	H.D. Standard Polyurethane	3,850	15.50	8.68	2.50	90-12309-65-1	57.00
12	3.50	Phenolic Resin	4,000	15.50	8.68	2.50	90-12359-30-1	60.00
12	3.50	Mold On Rubber	1,350	15.50	8.68	2.50	90-12359-70-1	63.00
12	4.00	H.D. Standard Polyurethane	5,500	15.50	8.73	2.50	90-12409-65-1	75.00
12	4.00	H.D. T/R Polyurethane	3,800	15.50	8.73	2.50	90-12409-66-1	75.00
12	4.00	H.D. Hard Polyurethane (70D)	6,600	15.50	8.73	2.50	90-12409-67-1	75.00
12	4.00	Mold On Rubber	1,600	15.50	8.73	2.50	90-12409-70-1	71.00
12	4.00	Ductile Iron	7,500	15.50	8.73	2.50	90-12409-12-1	90.00
12	5.00	H.D. Standard Polyurethane	6,250	15.50	8.86	2.50	90-12509-65-1	90.00
12	5.00	H.D. Hard Polyurethane (70D)	7,500	15.50	8.86	2.50	90-12509-67-1	90.00
12	5.00	Mold On Rubber	1,850	15.50	8.86	2.50	90-12509-70-1	88.00
12	5.00	Ductile Iron	8,000	15.50	8.86	2.50	90-12509-12-1	120.00
16	4.00	Laminated Phenolic	8,000	19.00	11.18	3.00	90-16409-35-1	80.00
16	4.00	Cast Iron	7,500	19.00	11.18	3.00	90-16409-10-1	105.00
16	4.00	H.D. Standard Polyurethane	6,000	19.00	11.18	3.00	90-16409-65-1	109.00
16	4.00	Mold On Rubber	1,450	19.00	11.18	3.00	90-16409-70-1	106.00
16	5.00	H.D. Standard Polyurethane	8,000	19.00	11.28	3.00	90-16509-65-1	115.00
16	5.00	H.D. Hard Polyurethane (70D)	8,000	19.00	11.28	3.00	90-16509-67-1	115.00
18	5.00	H.D. Standard Polyurethane	8,000	21.00	13.24	4.00	90-18509-65-1	115.00
18	5.00	H.D. Hard Polyurethane (70D)	8,000	21.00	13.24	4.00	90-18509-67-1	115.00

Capacity listed is for manual operation. For powered operations, consult factory.

Part Numbers listed are for the swivel casters. For rigid casters, change the last digit from 1 to 2 (i.e. 90-10309-70-2)

Estimated weight is for swivel caster. Deduct 15 pounds for rigid casters.

All dimensions are in inches. All weights are in pounds.



KINGPINLESS STYLE 91 SERIES CASTERS

