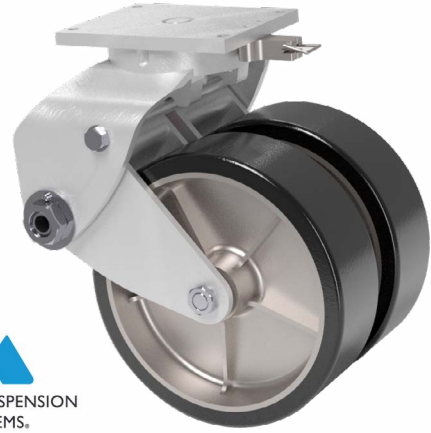
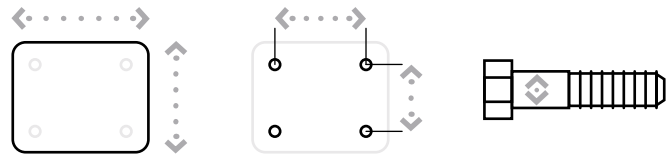


# ALUMINUM CASTERS MODERN SUSPENSION



## MAXIMUM CAPACITY

# 25,000 lbs.



Top Plate Size	Bolt Hole Spacing	Bolt Diameter
25 Series Standard: 3.75" x 2.75"	3" x 1.75"	0.312"
33 Series Standard: 4.5" x 3.75"	3.625" x 2.625"	0.375"
38 Series Standard: 6.75" x 6"	5.50" x 4.625"	0.5"
38-3 Series Standard: 6.75" x 6"	5.50" x 4.625"	0.5"
39 Series Standard: 6.75" x 6"	5.50" x 4.625"	0.5"
40 Series Standard: 11" x 9"	9.75" x 7"	0.625"
40H Series Standard: 11" x 9"	9.75" x 7"	0.625"
138 Series Standard: 11" x 9"	9.75" x 7"	0.625"
140 Series Standard: 11" x 9"	9.75" x 7"	0.625"

## FEATURES

**Swivel Section:** Aluminum constructed, including the yoke, swivel section, and wheel core. Steel constructed casters available.

**Axle:** 5/16" - 3/4" diameter axles.

**Lubrication:** Pre-lubricated before shipping.

**Wheels:** 3" to 16" diameter wheels. Single and dual wheel options available.

## APPLICATIONS

Aviation Equipment / Ground Support  
Aerospace Manufacturing / Aircraft Dollies  
Airline Catering / Food Service  
Assembly Fixtures / Automotive  
Cargo Decks / Pallet Trailers  
Defense / Military Equipment  
Electronics / Office Equipment  
Luggage Racks / Hotel Equipment  
Race Car Pit Carts / Tooling Fixtures  
Staging / Mobile Movie Sets

## BENEFITS

Our Modern Suspension® casters utilize our Vari-Flex linear suspension system, which achieves optimal shock reduction, and drastically reduces shimmy, dynamic bounce and resonance when the cart is empty, or loaded beyond its rated capacity.

In addition, our dual wheel models feature a completely independent suspension. Each wheel is on its own separate axle with separate legs. This helps to keep both wheels on the ground and help keep the load level, even when the ground isn't.

### TOP PLATES CONTINUED

Top Plate Size	Bolt Hole Spacing	Bolt Diameter
339 Series Standard: 11" x 9"	9.75" x 7"	0.625"
340 Series Standard: 11" x 9"	9.75" x 7"	0.625"
440 Series Standard: 12" x 12"	8.50" x 8.50"	0.75"
539 Series Standard: 12" x 12"	8.50" x 8.50"	0.75"
539H Series Standard: 12" x 12"	8.50" x 8.50"	0.75"

# ALUMINUM CASTERS MODERN SUSPENSION

### 25 SERIES ALUMINUM CASTERS

Diameter	Width	Material	Capacity Range	Non-Flexed Height	Full-Flexed Height	Swivel Radius	Series	Weight
3	1.38	Thermoplastic	160-442	5.5	4.75	3.19	25	4.75
6	1.25	Mold On Rubber	100-276	8.31	7.31	6.25	25	5
6	1.38	Standard Polyurethane	100-276	8.31	7.31	6.25	25	5

### 33 SERIES ALUMINUM CASTERS

Diameter	Width	Material	Capacity Range	Non-Flexed Height	Full-Flexed Height	Swivel Radius	Series	Weight
4	2.00	Phenolic Resin	210-625	7.31	5.94	3.88	33	5.75
4	2.00	Standard Polyurethane	210-625	7.31	5.94	3.88	33	5.75
6	2.00	Phenolic Resin	135-540	9.13	7.63	5.50	33	6.75
6	2.00	Standard Polyurethane	135-540	9.13	7.63	5.50	33	6.75
8	2.00	Standard Polyurethane	90-360	11.38	9.63	7.38	33	10.75

### 38 SERIES ALUMINUM CASTERS

Diameter	Width	Material	Capacity Range	Non-Flexed Height	Full-Flexed Height	Swivel Radius	Series	Weight
6	2.00	Standard Polyurethane	490-995	9.88	8.38	5.38	38	18.00
8	2.50	Mold On Rubber	470-955	11.88	10.38	6.63	38	21.00
8	2.50	Phenolic Resin	470-955	11.88	10.38	6.63	38	21.00
8	2.50	Standard Polyurethane	470-955	11.88	10.38	6.63	38	21.00

### 39 SERIES ALUMINUM CASTERS

Diameter	Width	Material	Capacity Range	Non-Flexed Height	Full-Flexed Height	Swivel Radius	Series	Weight
8	2.50	Mold On Rubber	425-3,600	11.75	10.25	8.13	39	38.00
8	3.00	Standard Polyurethane	425-3,600	11.75	10.25	8.13	39	38.00
10	3.00	Mold On Rubber	400-3,000	14.38	12.38	9.38	39	41.00
10	3.00	Standard Polyurethane	400-3,000	14.38	12.38	9.38	39	41.00
10	3.00	Phenolic Resin	400-3,000	14.38	12.38	9.38	39	41.00
12	3.00	Standard Polyurethane	350-3,150	17.00	15.00	10.63	39	44.00

### 138 SERIES ALUMINUM CASTERS

Diameter	Width	Material	Capacity Range	Non-Flexed Height	Full-Flexed Height	Swivel Radius	Series	Weight
10	4.00	Mold On Rubber	1,600-4,750	15.75	13.25	10.00	138	90.00
10	4.00	Standard Polyurethane	1,600-4,750	15.75	13.25	10.00	138	90.00

### 339 SERIES ALUMINUM CASTERS

Diameter	Width	Material	Capacity Range	Non-Flexed Height	Full-Flexed Height	Swivel Radius	Series	Weight
16	5.00	Mold On Rubber	3,740-7,824	21.88	19.13	15.00	339	185.00
16	5.00	Standard Polyurethane	3,740-7,824	21.88	19.13	15.00	339	185.00

Capacity listed is for manual operation. For powered operations, consult factory.  
Part numbers listed are for the swivel casters. For rigid casters, please consult factory.  
All dimensions are in inches. All weights are in pounds.  
Swivel radius is for unloaded caster.

CONTINUED

# STEEL CASTERS MODERN SUSPENSION

## 33 SERIES STEEL CASTERS

Diameter	Width	Material	Capacity Range	Non-Flexed Height	Full-Flexed Height	Swivel Radius	Series	Weight
4	2.00	Phenolic Resin	200-675	7.31	6.31	3.88	33	14.50
4	2.00	Standard Polyurethane	200-675	7.31	6.31	3.88	33	14.50
6	2.00	Phenolic Resin	135-625	9.25	8.13	5.50	33	16.50
6	2.00	Standard Polyurethane	135-625	9.25	8.13	5.50	33	16.50
8	2.00	Standard Polyurethane	135-460	11.63	10.38	7.38	33	20.00

## 38 SERIES STEEL CASTERS

Diameter	Width	Material	Capacity Range	Non-Flexed Height	Full-Flexed Height	Swivel Radius	Series	Weight
6	2.00	Standard Polyurethane	640-900	9.69	8.31	5.38	38	28.00
8	2.50	Mold On Rubber	440-1,200	11.94	10.44	6.63	38	31.00
8	2.50	Phenolic Resin	440-1,200	11.94	10.44	6.63	38	31.00
8	2.50	Standard Polyurethane	440-1,200	11.94	10.44	6.63	38	31.00
10			425-800	13.75	12.13	8.38	38	35.00

## 38-3 SERIES STEEL CASTERS

Diameter	Width	Material	Capacity Range	Non-Flexed Height	Full-Flexed Height	Swivel Radius	Series	Weight
6	3.00	Standard Polyurethane	885-1,400	9.69	8.31	5.38	38-3	30.00
8	2.50	Phenolic Resin	660-1,800	11.94	10.44	6.63	38-3	32.00
8	2.50	Standard Polyurethane	660-1,800	11.94	10.44	6.63	38-3	32.00
8	3.00	Standard Polyurethane	660-1,800	11.94	10.44	6.63	38-3	32.00
10	3.00	Standard Polyurethane	650-1,160	13.75	12.13	8.38	38-3	36.00

## 39 SERIES STEEL CASTERS

Diameter	Width	Material	Capacity Range	Non-Flexed Height	Full-Flexed Height	Swivel Radius	Series	Weight
8	2.50	Mold On Rubber	375-3,570	11.81	10.31	8.13	39	51.00
8	3.00	Standard Polyurethane	375-3,570	14.38	10.31	8.13	39	51.00
10	3.00	Mold On Rubber	390-3,212	14.38	12.50	9.38	39	54.00
10	3.00	Standard Polyurethane	390-3,212	14.38	12.50	9.38	39	54.00
10	3.00	Phenolic Resin	390-3,212	14.38	12.50	9.38	39	54.00
12	3.00	Standard Polyurethane	320-3,100	17.06	15.06	10.63	39	65.00
16	3.00	Standard Polyurethane	1,665-2,954	20.13	16.50	14.63	39	93.00

CONTINUED

# STEEL CASTERS MODERN SUSPENSION

## 40 SERIES STEEL CASTERS

Diameter	Width	Material	Capacity Range	Non-Flexed Height	Full-Flexed Height	Swivel Radius	Series	Weight
10	5.00	ErgoTread	2,471-4,750	15.56	13.69	9.75	40	110.00
10	5.00	Standard Polyurethane	2,471-4,750	15.56	13.69	9.75	40	110.00
10	5.00	Standard Polyurethane	2,471-4,750	15.56	13.69	9.75	40	110.00
15	5.00	Standard Polyurethane		20.25	17.94	14.25	40	134.00
16	5.00	Mold On Rubber					40	
16	5.00	Standard Polyurethane					40	

## 40H SERIES STEEL CASTERS

Diameter	Width	Material	Capacity Range	Non-Flexed Height	Full-Flexed Height	Swivel Radius	Series	Weight
10	5.00	ErgoTread	4,988	16.31	14.44	9.75	40H	125.00
10	5.00	Standard Polyurethane	4,988	16.31	14.44	9.75	40H	125.00
10	5.00	Standard Polyurethane	4,988	16.31	14.44	9.75	40H	125.00
15	5.00	Standard Polyurethane		20.56	18.06	14.25	40H	143.00

## 140 SERIES STEEL CASTERS

Diameter	Width	Material	Capacity Range	Non-Flexed Height	Full-Flexed Height	Swivel Radius	Series	Weight
8			680-6,650	12.25	10.50	9.13	140	119.00
10	3.00	Standard Polyurethane	812-6,424	14.50	12.63	10.63	140	128.00
12	6.00	Standard Polyurethane	670-6,400	17.31	15.44	12.00	140	144.00
16	3.00	Mold On Rubber	1,665	21.25	18.75	15.63	140	206.00
16	3.00	Standard Polyurethane	1,665	21.25	18.75	15.63	140	206.00

## 340 SERIES STEEL CASTERS

Diameter	Width	Material	Capacity Range	Non-Flexed Height	Full-Flexed Height	Swivel Radius	Series	Weight
10				16.38	14.44	12.25	340	202.00
16	5.00	Standard Polyurethane	1,665-7,088	21.13	18.44	16.50	340	240.00

## 440 SERIES STEEL CASTERS

Diameter	Width	Material	Capacity Range	Non-Flexed Height	Full-Flexed Height	Swivel Radius	Series	Weight
10	5.00	Standard Polyurethane	7,032-12,952	18.31	16.38	12.25	440	230.00
15	5.00	Standard Polyurethane	5,680-9,380	22.56	20.00	16.00	440	310.00

## 539 SERIES STEEL CASTERS

Diameter	Width	Material	Capacity Range	Non-Flexed Height	Full-Flexed Height	Swivel Radius	Series	Weight
15	5.00	Standard Polyurethane	16,000	25.94	22.94	16	539	630.00

## 539H SERIES STEEL CASTERS

Diameter	Width	Material	Capacity Range	Non-Flexed Height	Full-Flexed Height	Swivel Radius	Series	Weight
15	5.00	Standard Polyurethane	25,000	25.94	24.44	16	539H	730.00

Capacity listed is for manual operation. For powered operations, consult factory.  
Part numbers listed are for the swivel casters. For rigid casters, please consult factory.  
All dimensions are in inches. All weights are in pounds.  
Swivel radius is for unloaded caster.

# CASTERS SHOCK ABSORBING



## FEATURES

Our popular shock absorbing casters have swivel sections that are constructed of high alloy steel and are precision machined for close tolerances and long life. These casters feature legs of thick section plate steel. Integrally forged kingpins are available from 3/4" to 1-1/4" in diameter. In normal configurations, these swivel sections will carry 3 to 4 times their listed capacity.

## APPLICATIONS

Shock absorbing casters are ideal for jet engine dollies, aircraft jacks, in-plant trailers, trash gondolas, lift truck stabilizer casters, revolving signs and parade floats.

## BENEFITS

The high strength chrome vanadium springs provide longer life through constant flexing and compressing. The spring compression starts with as little as 25 pounds loading per caster resulting in cushioned loads and quiet empty returns. The long swivel lead reduces excessive shimmy and vibration while towing.

## OPTIONS

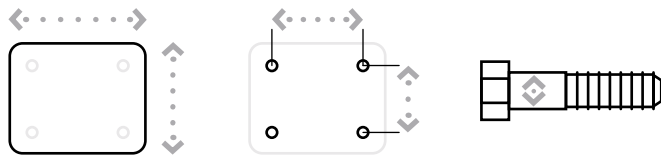
### BRAKES

Poly Lock: ..... P  
Face Contact: ..... F

### SWIVEL LOCKS

Factory Installed: ..... L  
Demountable: ..... DL  
Foot Actuated: ..... KL

MAXIMUM CAPACITY  
**20,000** lbs.



Top Plate Size	Bolt Hole Spacing	Bolt Diameter
Standard 53: 4" x 5"	2.625" x 3.625" Slotted to 3" x 3"	0.75"
Standard 63/67: 4.5" x 6.25"	2.438" x 4.938" Slotted to 3.375" x 5.25"	0.5"
Standard 73: 5" x 7.25"	3.375" x 5.25" Slotted to 4.125" x 6.125"	0.5"
Standard 83: 6" x 7.5"	4.5" x 6"	0.5"
Standard 93: 8.5" x 8.5"	7" x 7"	0.625"

# CASTERS SHOCK ABSORBING

## STRAIGHT ROLLER BEARING

Diameter	Width	Material	Capacity	OAH	Swivel Radius	Swivel Lead	Series	Part Number	Weight
4	2.00	Standard Polyurethane	500	7.31	3.88	1.75	50	<a href="#">53-04201-60-1</a>	13.00
4	2.00	Mold On Rubber	400	7.31	3.88	1.75	50	<a href="#">53-04201-71-1</a>	13.00
4	2.00	Phenolic Resin	500	7.31	3.88	1.75	50	<a href="#">53-04201-30-1</a>	12.00
5	2.00	Standard Polyurethane	500	7.81	4.37	1.75	50	<a href="#">53-05201-60-1</a>	13.00
5	2.00	Mold On Rubber	400	7.81	4.37	1.75	50	<a href="#">53-05201-71-1</a>	13.00
5	2.00	Phenolic Resin	500	7.81	4.37	1.75	50	<a href="#">53-05201-30-1</a>	12.00
6	2.00	Standard Polyurethane	500	9.25	5.34	2.25	50	<a href="#">53-06201-60-1</a>	15.00
6	2.00	Mold On Rubber	425	9.25	5.34	2.25	50	<a href="#">53-06201-71-1</a>	15.00
6	2.00	Phenolic Resin	500	9.25	5.34	2.25	50	<a href="#">53-06201-30-1</a>	13.00
8	2.00	Standard Polyurethane	500	11.63	7.32	3.25	50	<a href="#">53-08201-60-1</a>	16.00
8	2.00	Mold On Rubber	500	11.63	7.32	3.25	50	<a href="#">53-08201-71-1</a>	16.00
8	2.00	Phenolic Resin	500	11.63	7.32	3.25	50	<a href="#">53-08201-30-1</a>	13.00
5	2.00	Standard Polyurethane	400	7.50	5.34	2.75	60	<a href="#">63-05201-60-1</a>	13.00
5	2.00	Mold On Rubber	400	7.50	5.34	2.75	60	<a href="#">63-05201-71-1</a>	13.00
5	2.00	Phenolic Resin	400	7.50	5.34	2.75	60	<a href="#">63-05201-30-1</a>	11.00
6	2.00	Standard Polyurethane	500	8.50	5.47	2.38	60	<a href="#">63-06201-60-1</a>	15.00
6	2.00	Mold On Rubber	500	8.50	5.47	2.38	60	<a href="#">63-06201-71-1</a>	15.00
6	2.00	Phenolic Resin	500	8.50	5.47	2.38	60	<a href="#">63-06201-30-1</a>	13.00
8	2.00	Standard Polyurethane	500	10.50	7.57	3.50	60	<a href="#">63-08201-60-1</a>	16.00
8	2.00	Mold On Rubber	410	10.50	7.57	3.50	60	<a href="#">63-08201-71-1</a>	16.00
8	2.00	Phenolic Resin	500	10.50	7.57	3.50	60	<a href="#">63-08201-30-1</a>	13.00
6	2.50	Standard Polyurethane	800	9.50	6.74	3.63	65	<a href="#">67-06255-60-1</a>	27.00
6	2.50	Mold On Rubber	670	9.50	6.74	3.63	65	<a href="#">67-06255-70-1</a>	26.00
6	2.50	Phenolic Resin	800	9.50	6.74	3.63	65	<a href="#">67-06255-30-1</a>	18.00
8	2.50	Standard Polyurethane	800	11.50	8.10	4.00	65	<a href="#">67-08255-60-1</a>	25.00
8	2.50	Mold On Rubber	670	11.50	8.10	4.00	65	<a href="#">67-08255-70-1</a>	25.00
8	2.50	Phenolic Resin	800	11.50	8.10	4.00	65	<a href="#">67-08255-30-1</a>	20.00
10	2.50	Standard Polyurethane	800	14.00	10.57	5.50	65	<a href="#">67-10255-60-1</a>	32.00
10	2.50	Mold On Rubber	800	14.00	10.57	5.50	65	<a href="#">67-10255-70-1</a>	27.00
10	2.50	Phenolic Resin	800	14.00	10.57	5.50	65	<a href="#">67-10255-30-1</a>	22.00
6	3.00	Standard Polyurethane	1,100	10.00	7.16	4.00	71	<a href="#">73-06301-60-1</a>	35.00
6	3.00	Mold On Rubber	700	10.00	7.16	4.00	71	<a href="#">73-06301-70-1</a>	34.00
6	3.00	Phenolic Resin	1,100	10.00	7.16	4.00	71	<a href="#">73-06301-30-1</a>	28.00
8	3.00	Standard Polyurethane	1,100	12.00	8.14	4.00	71	<a href="#">73-08301-60-1</a>	38.00
8	3.00	Mold On Rubber	850	12.00	8.14	4.00	71	<a href="#">73-08301-70-1</a>	38.00
8	3.00	H.D. T/R Polyurethane	1,100	12.00	8.14	4.00	71	<a href="#">73-08301-66-1</a>	32.00
10	3.00	Standard Polyurethane	1,100	13.50	9.62	4.50	71	<a href="#">73-10301-60-1</a>	45.00
10	3.00	Mold On Rubber	1,100	13.50	9.62	4.50	71	<a href="#">73-10301-70-1</a>	42.00
10	3.00	H.D. T/R Polyurethane	1,100	13.50	9.62	4.50	71	<a href="#">73-10301-66-1</a>	38.00

Capacity listed is for manual operation. For powered operations, consult factory.

Estimated weight is for swivel caster. Deduct 20 percent for rigid casters.

Part Numbers listed are for the swivel casters. For rigid casters, change the last digit from 1 to 2 (i.e. 83-12309-30-2)

All dimensions are in inches. All weights are in pounds.

Overall heights and swivel radiuses listed are at NO load/weight.

CONTINUED

# CASTERS SHOCK ABSORBING

## STRAIGHT ROLLER BEARING

Diameter	Width	Material	Capacity	OAH	Swivel Radius	Swivel Lead	Series	Part Number	Weight
8	3.00	Standard Polyurethane	1,700	12.00	8.14	4.00	80	<a href="#">83-08301-60-1</a>	58.00
8	3.00	Mold On Rubber	825	12.00	8.14	4.00	80	<a href="#">83-08301-70-1</a>	58.00
8	3.00	H.D. T/R Polyurethane	1,700	12.00	8.14	4.00	80	<a href="#">83-08301-66-1</a>	48.00
10	3.00	Standard Polyurethane	1,700	14.50	9.62	4.50	80	<a href="#">83-10301-60-1</a>	65.00
10	3.00	Mold On Rubber	1,000	14.50	9.62	4.50	80	<a href="#">83-10301-70-1</a>	55.00
10	3.00	H.D. T/R Polyurethane	1,700	14.50	9.62	4.50	80	<a href="#">83-10301-66-1</a>	50.00
12	3.00	Standard Polyurethane	1,500	17.00	11.60	5.50	80	<a href="#">83-12301-60-1</a>	65.00
12	3.00	Mold On Rubber	1,150	17.00	11.60	5.50	80	<a href="#">83-12301-70-1</a>	62.00
12	3.00	Phenolic Resin	1,500	17.00	11.60	5.50	80	<a href="#">83-12301-30-1</a>	64.00

## PRECISION TAPERED BEARING

Diameter	Width	Material	Capacity	OAH	Swivel Radius	Swivel Lead	Series	Part Number	Weight
6	2.50	Standard Polyurethane	800	9.50	6.74	3.63	65	<a href="#">67-06257-60-1</a>	27.00
6	2.50	Mold On Rubber	670	9.50	6.74	3.63	65	<a href="#">67-06257-70-1</a>	26.00
6	2.50	Phenolic Resin	800	9.50	6.74	3.63	65	<a href="#">67-06257-30-1</a>	18.00
8	2.50	Standard Polyurethane	800	11.50	8.10	4.00	65	<a href="#">67-08257-60-1</a>	25.00
8	2.50	Mold On Rubber	670	11.50	8.10	4.00	65	<a href="#">67-08257-70-1</a>	25.00
8	2.50	Phenolic Resin	800	11.50	8.10	4.00	65	<a href="#">67-08257-30-1</a>	20.00
10	2.50	Standard Polyurethane	800	14.00	10.57	5.50	65	<a href="#">67-10257-60-1</a>	32.00
10	2.50	Mold On Rubber	800	14.00	10.57	5.50	65	<a href="#">67-10257-70-1</a>	27.00
10	2.50	Phenolic Resin	800	14.00	10.57	5.50	65	<a href="#">67-10257-30-1</a>	22.00
6	3.00	Standard Polyurethane	1,100	10.00	7.16	4.00	71	<a href="#">73-06309-60-1</a>	35.00
6	3.00	Mold On Rubber	700	10.00	7.16	4.00	71	<a href="#">73-06309-70-1</a>	34.00
6	3.00	Phenolic Resin	1,100	10.00	7.16	4.00	71	<a href="#">73-06309-30-1</a>	28.00
8	3.00	Standard Polyurethane	1,100	12.00	8.14	4.00	71	<a href="#">73-08309-60-1</a>	38.00
8	3.00	Mold On Rubber	850	12.00	8.14	4.00	71	<a href="#">73-08309-70-1</a>	38.00
8	3.00	H.D. T/R Polyurethane	1,100	12.00	8.14	4.00	71	<a href="#">73-08309-66-1</a>	32.00
10	3.00	Standard Polyurethane	1,100	13.50	9.62	4.50	71	<a href="#">73-10309-60-1</a>	45.00
10	3.00	H.D. T/R Polyurethane	1,100	13.50	9.62	4.50	71	<a href="#">73-10309-66-1</a>	45.00
10	3.00	Mold On Rubber	1,100	13.50	9.62	4.50	71	<a href="#">73-10309-70-1</a>	42.00

CONTINUED

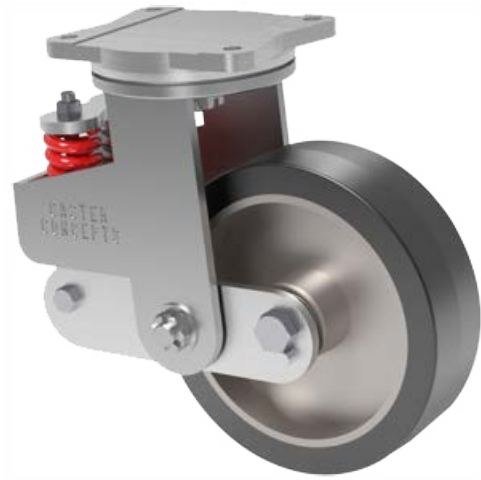
# CASTERS SHOCK ABSORBING

## PRECISION TAPERED BEARING

Diameter	Width	Material	Capacity	OAH	Swivel Radius	Swivel Lead	Series	Part Number	Weight
8	3.00	Standard Polyurethane	1,700	12.00	8.14	4.00	80	<a href="#">83-08309-60-1</a>	58.00
8	3.00	Mold On Rubber	825	12.00	8.14	4.00	80	<a href="#">83-08309-70-1</a>	58.00
8	3.00	H.D. T/R Polyurethane	1,700	12.00	8.14	4.00	80	<a href="#">83-08309-66-1</a>	48.00
10	3.00	Standard Polyurethane	1,700	14.50	9.62	4.50	80	<a href="#">83-10309-60-1</a>	65.00
10	3.00	Mold On Rubber	1,000	14.50	9.62	4.50	80	<a href="#">83-10309-70-1</a>	55.00
10	3.00	H.D. T/R Polyurethane	1,700	14.50	9.62	4.50	80	<a href="#">83-10309-66-1</a>	50.00
12	3.00	Standard Polyurethane	1,500	17.00	11.60	5.50	80	<a href="#">83-12309-60-1</a>	65.00
12	3.00	Mold On Rubber	1,150	17.00	11.60	5.50	80	<a href="#">83-12309-70-1</a>	62.00
12	3.00	Phenolic Resin	1,500	17.00	11.60	5.50	80	<a href="#">83-12309-30-1</a>	64.00
10	4.00	Standard Polyurethane	4,000	16.25	7.16	3.50	91	<a href="#">93-10409-60-1</a>	100.00
10	4.00	Forged Steel	4,000	16.25	7.16	3.50	91	<a href="#">93-10409-20-1</a>	110.00
10	5.00	H.D. Standard Polyurethane	4,000	16.25	7.16	3.50	91	<a href="#">93-10509-65-1</a>	110.00
10	5.00	H.D. Standard Polyurethane	8,000	16.25		3.50	91	<a href="#">2-93-10509-65-1</a>	250.00
18	5.00	H.D. Standard Polyurethane	20,000	25.50		4.50	91	<a href="#">103-18509-65-1</a>	400.00

Capacity listed is for manual operation. For powered operations, consult factory.  
 Part Numbers listed are for the swivel casters. For rigid casters, change the last digit from 1 to 2 (i.e. 83-12309-30-2)  
 Estimated weight is for swivel caster. Deduct 20 percent for rigid casters.  
 All dimensions are in inches. All weights are in pounds.  
 Overall heights listed are at NO load/weight.  
 Swivel radius is for unloaded caster.

# CASTERS VERTICAL MOUNTED SPRING



## FEATURES

Vertical mounted spring (VMS) casters offer the highest flexibility in design. Each caster features springs that are retained on threaded rod ends for pre-load capabilities. Pre-loading the caster causes the caster to stand strong to a predetermined load before any deflection.

The VMS caster can be built with standard components and varying capacities by simply changing out the springs.

## APPLICATIONS

VMS casters are ideal for jet engine dollies, aircraft jacks, in-plant trailers, trash gondolas, lift truck stabilizer casters, revolving signs and parade floats.

## OPTIONS

### BRAKES

Poly Lock: ..... P  
Face Contact: ..... F

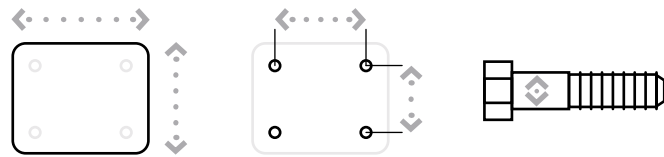
### SWIVEL LOCKS

Factory Installed: ..... L  
Demountable: ..... DL  
Foot Actuated: ..... KL

*Available with dual wheels and pneumatic tires.*

### MAXIMUM CAPACITY

# 3,800 lbs.



Top Plate Size	Bolt Hole Spacing	Bolt Diameter
Standard 54: 4" x 5"	2.625" x 3.625" Slotted to 3" x 3"	0.75"
Standard 64: 4.5" x 6.25"	2.438" x 4.938" Slotted to 3.375" x 5.25"	0.375"
Standard 74: 5.25" x 7.25"	3.375" x 5.25" Slotted to 4.125" x 6.125"	0.5"
Standard 84: 6" x 7.5"	4.5" x 6"	0.5"
Standard 94: 8.5" x 8.5"	7" x 7"	0.625"

# CASTERS VERTICAL MOUNTED SPRING

## STRAIGHT ROLLER BEARING (KINGPIN)

Diameter	Width	Material	Capacity	OAH	Swivel Radius	Swivel Lead	Series	Part Number	Weight
6	2.00	Standard Polyurethane	500	8.50	4.85	1.75	50	<a href="#">54-06201-60-1</a>	16.00
6	2.00	Phenolic Resin	500	8.50	4.85	1.75	50	<a href="#">54-06201-30-1</a>	12.00
6	2.00	Mold On Rubber	425	8.50	4.85	1.75	50	<a href="#">54-06201-70-1</a>	11.50
6	2.00	T/R Polyurethane	500	8.50	4.85	1.75	50	<a href="#">54-06201-61-1</a>	16.00
8	2.00	Standard Polyurethane	500	10.50	5.84	1.75	50	<a href="#">54-08201-60-1</a>	18.00
8	2.00	Phenolic Resin	500	10.50	5.84	1.75	50	<a href="#">54-08201-30-1</a>	13.00
8	2.00	Mold On Rubber	425	10.50	5.84	1.75	50	<a href="#">54-08201-70-1</a>	13.00
8	2.00	T/R Polyurethane	500	10.50	5.84	1.75	50	<a href="#">54-08201-61-1</a>	18.00
8	2.50	Standard Polyurethane	800	11.50	6.37	2.25	60	<a href="#">64-08255-60-1</a>	23.00
8	2.50	Phenolic Resin	800	11.50	6.37	2.25	60	<a href="#">64-08255-30-1</a>	20.00
8	2.50	Mold On Rubber	700	11.50	6.37	2.25	60	<a href="#">64-08255-70-1</a>	25.00
8	2.50	T/R Polyurethane	800	11.50	6.37	2.25	60	<a href="#">64-08255-61-1</a>	23.00
10	2.50	Standard Polyurethane	800	13.50	7.36	2.25	60	<a href="#">64-10255-60-1</a>	32.00
10	2.50	Phenolic Resin	800	13.50	7.36	2.25	60	<a href="#">64-10255-30-1</a>	22.00
10	2.50	Mold On Rubber	700	13.50	7.36	2.25	60	<a href="#">64-10255-70-1</a>	32.00
10	2.50	T/R Polyurethane	800	13.50	7.36	2.25	60	<a href="#">64-10255-61-1</a>	32.00
8	3.00	Standard Polyurethane	1,500	11.50	7.16	3.00	70	<a href="#">74-08301-60-1</a>	44.00
8	3.00	Phenolic Resin	1,500	11.50	7.16	3.00	70	<a href="#">74-08301-30-1</a>	35.00
8	3.00	Mold On Rubber	850	11.50	7.16	3.00	70	<a href="#">74-08301-70-1</a>	45.00
8	3.00	H.D. T/R Polyurethane	1,500	11.50	7.16	3.00	70	<a href="#">74-08301-66-1</a>	45.00
10	3.00	Standard Polyurethane	1,500	13.50	8.14	3.00	70	<a href="#">74-10301-60-1</a>	49.00
10	3.00	Phenolic Resin	1,500	13.50	8.14	3.00	70	<a href="#">74-10301-30-1</a>	39.00
10	3.00	Mold On Rubber	1,000	13.50	8.14	3.00	70	<a href="#">74-10301-70-1</a>	49.00
10	3.00	H.D. T/R Polyurethane	1,500	13.50	8.14	3.00	70	<a href="#">74-10301-66-1</a>	49.00
12	3.00	Standard Polyurethane	1,500	15.50	9.12	3.00	70	<a href="#">74-12301-60-1</a>	58.00
12	3.00	Phenolic Resin	1,500	15.50	9.12	3.00	70	<a href="#">74-12301-30-1</a>	43.00
12	3.00	Mold On Rubber	1,000	15.50	9.12	3.00	70	<a href="#">74-12301-70-1</a>	52.00
12	3.00	H.D. T/R Polyurethane	1,500	15.50	9.12	3.00	70	<a href="#">74-12301-66-1</a>	62.00

*All dimensions are in inches. All weights are in pounds.  
Overall heights listed are at NO load/weight.  
Swivel radius is for unloaded caster.*

CONTINUED

# CASTERS VERTICAL MOUNTED SPRING

## STRAIGHT ROLLER BEARING (KINGPIN)

Diameter	Width	Material	Capacity	OAH	Swivel Radius	Swivel Lead	Series	Part Number	Weight
8	3.00	Standard Polyurethane	2,500	11.50	7.16	3.00	80	<a href="#">84-08301-60-1</a>	50.00
8	3.00	Phenolic Resin	2,500	11.50	7.16	3.00	80	<a href="#">84-08301-30-1</a>	42.00
8	3.00	Mold On Rubber	850	11.50	7.16	3.00	80	<a href="#">84-08301-70-1</a>	47.00
8	3.00	H.D. T/R Polyurethane	2,500	11.50	7.16	3.00	80	<a href="#">84-08301-66-1</a>	55.00
10	3.00	Standard Polyurethane	2,500	13.50	9.12	4.00	80	<a href="#">84-10301-60-1</a>	59.00
10	3.00	Phenolic Resin	2,500	13.50	9.12	4.00	80	<a href="#">84-10301-30-1</a>	46.00
10	3.00	Mold On Rubber	1,000	13.50	9.12	4.00	80	<a href="#">84-10301-70-1</a>	60.00
12	3.00	Standard Polyurethane	2,500	15.50	10.11	4.00	80	<a href="#">84-12301-60-1</a>	67.00
12	3.00	Phenolic Resin	2,500	15.50	10.11	4.00	80	<a href="#">84-12301-30-1</a>	56.00
12	3.00	Mold On Rubber	1,150	15.50	10.11	4.00	80	<a href="#">84-12301-70-1</a>	65.00
12	3.00	H.D. T/R Polyurethane	2,500	15.50	10.11	4.00	80	<a href="#">84-12301-66-1</a>	70.00
10	4.00	Standard Polyurethane	3,800	13.50	9.22	4.00	90	<a href="#">94-10401-60-1</a>	70.00
10	4.00	Mold On Rubber	1,500	13.50	9.22	4.00	90	<a href="#">94-10401-70-1</a>	77.00
10	4.00	H.D. Standard Polyurethane	3,800	13.50	9.22	4.00	90	<a href="#">94-10401-65-1</a>	79.00
12	4.00	H.D. Standard Polyurethane	3,800	15.50	10.20	4.00	90	<a href="#">94-12401-65-1</a>	86.00
12	4.00	Mold On Rubber	1,600	15.50	10.20	4.00	90	<a href="#">94-12401-70-1</a>	86.00
12	4.00	H.D. T/R Polyurethane	3,800	15.50	10.20	4.00	90	<a href="#">94-12401-66-1</a>	86.00

## PRECISION TAPERED BEARING (KINGPIN)

Diameter	Width	Material	Capacity	OAH	Swivel Radius	Swivel Lead	Series	Part Number	Weight
8	3.00	Standard Polyurethane	1,500	11.50	7.16	3.00	70	<a href="#">74-08309-60-1</a>	44.00
8	3.00	Phenolic Resin	1,500	11.50	7.16	3.00	70	<a href="#">74-08309-30-1</a>	35.00
8	3.00	Mold On Rubber	850	11.50	7.16	3.00	70	<a href="#">74-08309-70-1</a>	45.00
8	3.00	H.D. T/R Polyurethane	1,500	11.50	7.16	3.00	70	<a href="#">74-08309-66-1</a>	45.00
10	3.00	Standard Polyurethane	1,500	13.50	8.14	3.00	70	<a href="#">74-10309-60-1</a>	49.00
10	3.00	Phenolic Resin	1,500	13.50	8.14	3.00	70	<a href="#">74-10309-30-1</a>	39.00
10	3.00	Mold On Rubber	1,000	13.50	8.14	3.00	70	<a href="#">74-10309-70-1</a>	49.00
10	3.00	H.D. T/R Polyurethane	1,500	13.50	8.14	3.00	70	<a href="#">74-10309-66-1</a>	49.00
12	3.00	Standard Polyurethane	1,500	15.50	9.12	3.00	70	<a href="#">74-12309-60-1</a>	58.00
12	3.00	Phenolic Resin	1,500	15.50	9.12	3.00	70	<a href="#">74-12309-30-1</a>	43.00
12	3.00	Mold On Rubber	1,000	15.50	9.12	3.00	70	<a href="#">74-12309-70-1</a>	52.00
12	3.00	H.D. T/R Polyurethane	1,500	15.50	9.12	3.00	70	<a href="#">74-12309-66-1</a>	62.00

CONTINUED

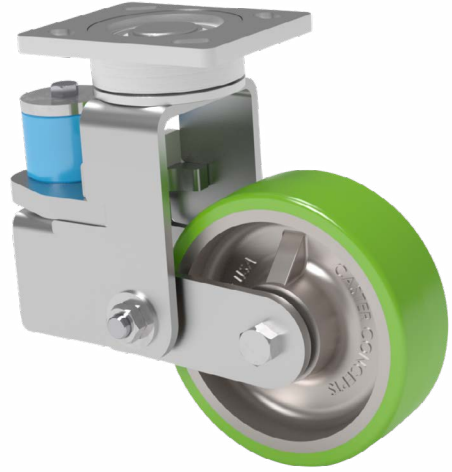
# CASTERS VERTICAL MOUNTED SPRING

## STRAIGHT ROLLER BEARING (KINGPIN)

Diameter	Width	Material	Capacity	OAH	Swivel Radius	Swivel Lead	Series	Part Number	Weight
8	3.00	Standard Polyurethane	2,500	11.50	7.16	3.00	80	<a href="#">84-08309-60-1</a>	50.00
8	3.00	Phenolic Resin	2,500	11.50	7.16	3.00	80	<a href="#">84-08309-30-1</a>	42.00
8	3.00	Mold On Rubber	850	11.50	7.16	3.00	80	<a href="#">84-08309-70-1</a>	47.00
8	3.00	H.D. T/R Polyurethane	2,500	11.50	7.16	3.00	80	<a href="#">84-08309-66-1</a>	55.00
10	3.00	Standard Polyurethane	2,500	13.50	9.12	4.00	80	<a href="#">84-10309-60-1</a>	59.00
10	3.00	Phenolic Resin	2,500	13.50	9.12	4.00	80	<a href="#">84-10309-30-1</a>	46.00
10	3.00	Mold On Rubber	1,000	13.50	9.12	4.00	80	<a href="#">84-10309-70-1</a>	60.00
12	3.00	Standard Polyurethane	2,500	15.50	10.11	4.00	80	<a href="#">84-12309-60-1</a>	67.00
12	3.00	Phenolic Resin	2,500	15.50	10.11	4.00	80	<a href="#">84-12309-30-1</a>	56.00
12	3.00	Mold On Rubber	1,150	15.50	10.11	4.00	80	<a href="#">84-12309-70-1</a>	65.00
12	3.00	H.D. T/R Polyurethane	2,500	15.50	10.11	4.00	80	<a href="#">84-12309-66-1</a>	70.00
10	4.00	Standard Polyurethane	3,800	13.50	9.22	4.00	90	<a href="#">94-10409-60-1</a>	70.00
10	4.00	Mold On Rubber	1,500	13.50	9.22	4.00	90	<a href="#">94-10409-70-1</a>	77.00
10	4.00	H.D. Standard Polyurethane	3,800	13.50	9.22	4.00	90	<a href="#">94-10409-65-1</a>	79.00
12	4.00	H.D. Standard Polyurethane	3,800	15.50	10.20	4.00	90	<a href="#">94-12409-65-1</a>	86.00
12	4.00	Mold On Rubber	1,600	15.50	10.20	4.00	90	<a href="#">94-12409-70-1</a>	86.00
12	4.00	H.D. T/R Polyurethane	3,800	15.50	10.20	4.00	90	<a href="#">94-12409-66-1</a>	86.00

All dimensions are in inches. All weights are in pounds.  
Overall heights listed are at NO load/weight.  
Swivel radius is for unloaded caster.

# CASTERS COMPRESSION



## FEATURES

- Swivel Section:** Sealed precision ball bearing with hardened raceways and neoprene seals.
- Legs:** 1/4" x 2" steel, formed and continuously welded on the inside and outside of the yoke base.
- Kingpin:** Kingpinless style design.
- Axle:** 1/2" diameter.
- Lubrication:** Sealed ball bearing is lubricated and requires zero maintenance. Standard ball bearings are pre-lubricated before shipping.
- Wheels:** 8" diameter wheels are available with sealed precision ball bearings.
- Finish:** Clear zinc plating.

## BENEFITS

The compression caster integrates a dampening unit into the rig of the caster. This reduces the noise, vibration, and cushions the ride. The compression series offers a maintenance-free solution with its sealed precision ball bearing in the swivel section and in the wheels. The smooth rotating action and extended lead help lower ergonomic forces. A standard ball bearing swivel section is also available.

## APPLICATIONS

Excellent for instances where workplace safety related to hearing conservation is a concern. The compression caster can reduce noise levels by as much as 15 dBA. The vibration dampening properties are ideal for transporting fragile components like electronics.

## OPTIONS

- BRAKES**
- Poly Lock: ..... P
  - Face Contact: ..... F
- SWIVEL LOCKS**
- Factory Installed: ..... L
  - Demountable: ..... DL
  - Foot Actuated: ..... KL

Contact factory for other configurations, part numbers, and pricing.

# CASTERS COMPRESSION

### PRECISION BALL BEARING (51 SERIES)

Diameter	Width	Material	Capacity	OAH	Swivel Radius	Swivel Lead	Series	Part Number	Weight
8	2.00	T/R Polyurethane	1,240	10.13	7.07	3.00	51CC	51CC-08202-61-1	22.23
8	2.00	T/R-95 Polyurethane	1,500	10.13	7.07	3.00	51CC	51CC-08202-91-1	22.23
8	2.00	HPPT Polyurethane	1,500	10.13	7.07	3.00	51CC	51CC-08202-90-1	22.23
8	2.00	ErgoTread	1,178	10.13	7.07	3.00	51CC	51CC-08202-40-1	22.23

### PRECISION BALL BEARING (55 SERIES)

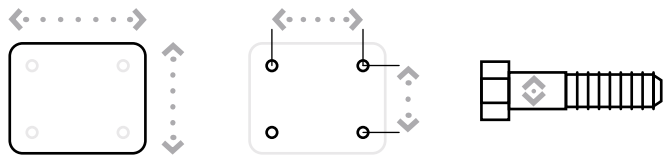
Diameter	Width	Material	Capacity	OAH	Swivel Radius	Swivel Lead	Series	Part Number	Weight
8	2.00	T/R Polyurethane	1,000	10.13	7.07	3.00	55CC	55CC-08202-61-1	22.23
8	2.00	T/R-95 Polyurethane	1,000	10.13	7.07	3.00	55CC	55CC-08202-91-1	22.23
8	2.00	HPPT Polyurethane	1,000	10.13	7.07	3.00	55CC	55CC-08202-90-1	22.23
8	2.00	ErgoTread	1,000	10.13	7.07	3.00	55CC	55CC-08202-40-1	22.23

### PRECISION BALL BEARING (57 SERIES)

Diameter	Width	Material	Capacity	OAH	Swivel Radius	Swivel Lead	Series	Part Number	Weight
8	2.00	T/R Polyurethane	1,240	10.75	7.07	3.00	57CC	57CC-08202-61-1	22.23
8	2.00	T/R-95 Polyurethane	1,500	10.75	7.07	3.00	57CC	57CC-08202-91-1	22.23
8	2.00	HPPT Polyurethane	1,500	10.75	7.07	3.00	57CC	57CC-08202-90-1	22.23
8	2.00	ErgoTread	1,178	10.75	7.07	3.00	57CC	57CC-08202-40-1	22.23

MAXIMUM CAPACITY

# 1,500 lbs.



Top Plate Size	Bolt Hole Spacing	Bolt Diameter
51CC & 55CC Series Standard: 4" x 5"	2.625" x 3.625" Slotted to 3" x 3"	0.375"
57CC Series Standard: 4.5" x 6.25"	2.438" x 4.938" Slotted to 3.375" x 5.25"	0.5"
51CC & 55CC Optional Top Plate 60: 4.5" x 6.25"	2.438" x 4.938" Slotted to 3.375" x 5.25"	0.5"
57CC Series Optional Top Plate 70: 5" x 7.25"	3.375" x 5.25" Slotted to 4.125" x 6.125"	0.5"
57CC Series Optional Top Plate 75: 6" x 7"	4.62" x 5.5"	0.5"

Capacity listed is for manual operation. For powered operations, consult factory.  
 Roller bearing and tapered bearings are available, consult factory for additional information.  
 Part Numbers listed are for the swivel caster. For rigid casters, change the last digit from 1 to 2 (i.e. XXCC-08202-XX-2).  
 Estimated weight is for swivel caster. Deduct 20 percent of swivel caster weight for rigid casters.  
 All dimensions are in inches. All weights are in pounds.  
 Overall heights listed are at NO load/weight.  
 Swivel radius is for unloaded caster.