

# XS



Premium Quality

## Ultimate X-tra Soft Rubber

The Ultimate X-tra soft rubber wheels offer the ultimate in ergonomic ease. Whether it's durability, quiet operation, or rollability, these wheels can answer your every application need.

### FEATURES

- **Wheel Face:** Moderate crown
- **Finish:** Non-marking grey tread on grey core
- **Temperature Range:** -45°F to +180°F
- **Hardness:** 65-75 Shore A

### WHEEL OPTIONS

- Prevenz™ Antimicrobial wheel available, specify **PREV**
- For customization, special applications or alternate bearings, consult factory



	Wheel Diameter (Inches)	Tread Width (Inches)	Capacity (Lbs) (Based on manual operation)	Hub Length (Inches)	Bore ID (Inches)	Bearing ID (Inches)	Approx. Wt. (Lbs)	Wheel Bearing	Wheel Number
<b>Xtra-Soft Flat Grey Tread (XS) (Light Duty)</b>									
3	1-1/4	200	1-1/2	1-1/16	1/2	5/16		Delrin	XS0305108
3	1-1/4	200	1-1/2	1-1/16	3/8	5/16		Annular Ball	XS0303106
3-1/2	1-1/4	250	1-1/2	1-1/16	1/2	5/16		Delrin	XS03X5108
3-1/2	1-1/4	250	1-1/2	1-1/16	3/8	5/16		Annular Ball	XS03X3106
4	1-1/4	300	1-1/2	1-1/16	1/2	3/8		Delrin	XS0405108
4	1-1/4	300	1-1/2	1-1/16	3/8	3/8		Annular Ball	XS0403106
5	1-1/4	325	1-1/2	1-1/16	1/2	3/4		Delrin	XS0505108
5	1-1/4	325	1-1/2	1-1/16	3/8	3/4		Annular Ball	XS0503106
6	1-1/4	325	1-1/2	1-1/16	1/2	3/4		Delrin	XS0605108
6	1-1/4	325	1-1/2	1-1/16	3/8	3/4		Annular Ball	XS0603106

<b>Xtra-Soft Flat Grey Tread (XS) (Medium Heavy Duty)</b>									
4	2	400	2-3/16	1-3/16	3/4	1		Delrin	XS0425112
4	2	400	2-3/16	1-3/16	3/4	1		Roller	XS0420112~
4	2	400	2-7/16	1-9/16	1/2	1		Precision Ball	XS0422808*
5	2	500	2-3/16	1-3/16	3/4	1-1/8		Delrin	XS0525112
5	2	500	2-3/16	1-3/16	3/4	1-1/8		Roller	XS0520112~
5	2	500	2-7/16	1-9/16	1/2	1-1/8		Precision Ball	XS0522808*
6	2	600	2-3/16	1-3/16	3/4	1-3/8		Delrin	XS0625112
6	2	600	2-3/16	1-3/16	3/4	1-3/8		Roller	XS0620112~
6	2	600	2-7/16	1-9/16	1/2	1-3/8		Precision Ball	XS0622808*
8	2	675	2-3/16	1-3/16	3/4	2-3/8		Delrin	XS0825112
8	2	675	2-3/16	1-3/16	3/4	2-3/8		Roller	XS0820112~
8	2	675	2-7/16	1-9/16	1/2	2-3/8		Precision Ball	XS0822808*

<b>Xtra-Soft Flat Black Tread (XS) (Center Hub)</b>									
8	1-1/2	350	2.32	1-3/8	1/2	3		Industrial Ball	XS0812708
8	1-1/2	350	2	1-3/16	N/A	3		Plain	XS081001901

<b>Xtra-Soft Light Duty Conductive (XY)</b>									
3	1-1/4	200	1-1/2	1-1/16	3/8	5/16		Annular Ball	XY0303106
3-1/2	1-1/4	250	1-1/2	1-1/16	3/8	5/16		Annular Ball	XY03X3106
4	1-1/4	300	1-1/2	1-1/16	3/8	3/8		Annular Ball	XY0403106
5	1-1/4	325	1-1/2	1-1/16	3/8	3/4		Annular Ball	XY0503106
6	1-1/4	325	1-1/2	1-1/16	3/8	3/4		Annular Ball	XY0603106

<b>Xtra-Soft Medium Heavy Duty Conductive (XY)</b>									
4	2	350	2-3/16	1-3/16	3/4	1		Roller	XY0420112~
4	2	350	2-7/16	1-9/16	1/2	1		Precision Ball	XY0422808*
5	2	375	2-3/16	1-3/16	3/4	1-1/8		Roller	XY0520112~
5	2	375	2-7/16	1-9/16	1/2	1-1/8		Precision Ball	XY0522808*
6	2	600	2-3/16	1-3/16	3/4	1-3/8		Roller	XY0620112~
6	2	500	2-7/16	1-9/16	1/2	1-3/8		Precision Ball	XY0622808*
8	2	675	2-3/16	1-3/16	3/4	2-3/8		Roller	XY0820112~
8	2	500	2-7/16	1-9/16	1/2	2-3/8		Precision Ball	XY0822808*

~ Wheels are complete with spanner bushing and nylon sealed retaining washer.  
\*Precision Sealed Bearings and top hats.

RUBBER ON POLYPROPYLENE • UP TO 675

## Prevenz™ Antimicrobial



The EPA registered and FDA compliant antimicrobial additive used in Prevenz™ wheels is designed to suppress the growth of a variety of destructive and odor causing microbes including bacteria, molds, mildew and fungi. These wheels are suitable for a variety of applications including medical equipment, food equipment, pharmaceutical, chemical, meat & poultry, processing plants and more. To order add "PREV" to end of caster number.

# XR

**Premium Quality**  
**Ultimate X-tra**  
**Soft Rubber**

The Ultimate X-tra soft rubber wheels offer the ultimate in ergonomic ease. Whether it's durability, quiet operation, or rollability, these wheels can answer your every application need.

### FEATURES

- **Wheel Face:** Round tread
- **Finish:** Non-marking grey tread on grey core.
- **Temperature Range:** -45°F to +180°F
- **Hardness:** 65-75 Shore A (unless otherwise specified)

### WHEEL OPTIONS

- Prevenz™ Antimicrobial wheel available, specify **PREV**
- For customization, special applications or alternate bearings consult factory



Made in the USA



8" diameter model



10" diameter model



Made in the USA

Wheel Diameter (Inches)	Tread Width (Inches)	Capacity (Lbs) (Based on manual operation)	Hub Length (Inches)	Bore ID (Inches)	Bearing ID (Inches)	Approx. Wt. (Lbs)	Wheel Bearing	Wheel Number
<b>Xtra-Soft Round Grey Tread (XR) (Light Duty)</b>								
3	1-1/4	200	1-1/2	1-1/16	3/8	5/16	Precision Ball	XR0302806
3-1/2	1-1/4	250	1-1/2	1-1/16	3/8	5/16	Precision Ball	XR03X2806
4	1-1/4	300	1-1/2	1-1/16	3/8	3/8	Precision Ball	XR0402806
5	1-1/4	325	1-1/2	1-1/16	3/8	3/4	Precision Ball	XR0502806

Wheel Diameter (Inches)	Tread Width (Inches)	Capacity (Lbs) (Based on manual operation)	Hub Length (Inches)	Bore ID (Inches)	Bearing ID (Inches)	Approx. Wt. (Lbs)	Wheel Bearing	Wheel Number
<b>Xtra-Soft Round Grey Tread (XR) (Medium Heavy Duty)</b>								
6	2	450	2-3/16	1-3/16	3/4	1-3/8	Delrin	XR0625112
6	2	450	2-3/16	1-3/16	3/4	1-3/8	Roller	XR0620112~
6	2	450	2-7/16	1-9/16	1/2	1-3/8	Precision Ball	XR0622808*
8	2	600	2-3/16	1-3/16	3/4	2-3/8	Delrin	XR0825112
8	2	600	2-3/16	1-3/16	3/4	2-3/8	Roller	XR0820112*
8	2	600	2-7/16	1-9/16	1/2	2-3/8	Precision Ball	XR0822808*

Wheel Diameter (Inches)	Tread Width (Inches)	Capacity (Lbs) (Based on manual operation)	Hub Length (Inches)	Bore ID (Inches)	Bearing ID (Inches)	Approx. Wt. (Lbs)	Wheel Bearing	Wheel Number
<b>Xtra-Soft Round Grey Tread (XR) (Heavy Duty)</b>								
10	2-1/2	850	3-1/2	2-7/16	3/4	3	Precision Ball	XR1042812*
10	2-1/2	850	3-1/4	1-15/16	1	3	Roller	XR1040116
10	2-1/2	850	3-1/4	1-15/16	1	1	Delrin	XR1045116

Tread Hardness is 50-60 Shore A.  
 ~ Wheels are complete with spanner bushing & nylon sealed retaining washers.  
 \* Precision sealed bearings and top hats.

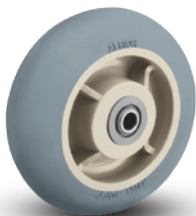
Wheel Diameter (Inches)	Tread Width (Inches)	Capacity (Lbs) (Based on manual operation)	Hub Length (Inches)	Bore ID (Inches)	Bearing ID (Inches)	Approx. Wt. (Lbs)	Wheel Bearing	Wheel Number
<b>Xtra-Soft Round Black Tread (XR) (Hand Truck Offset Hub)</b>								
8	2	250	2-1/4	1-3/8	1/2	2	Precision Ball	XR0822808H
8	2	250	2-1/4	1-3/8	5/8	2	Precision Ball	XR0822810H
10	2	250	2-1/4	1-3/8	1/2	3	Precision Ball	XR1022808H
10	2	250	2-1/4	1-3/8	5/8	3	Precision Ball	XR1022810H

Tread Hardness is 50-60 Shore A.  
 ~ Wheels are complete with spanner bushing & nylon sealed retaining washers.  
 \* Precision sealed bearings and top hats.

Wheel Diameter (Inches)	Tread Width (Inches)	Capacity (Lbs) (Based on manual operation)	Hub Length (Inches)	Bore ID (Inches)	Bearing ID (Inches)	Approx. Wt. (Lbs)	Wheel Bearing	Wheel Number
<b>Xtra-Soft Round Conductive (XZ)</b>								
6	2	450	2-3/16	1-3/16	1/2	1-3/8	Annular Ball	XZ0623108
6	2	450	2-3/16	1-3/16	3/4	1-3/8	Roller	XZ0620112~
6	2	450	2-7/16	1-9/16	1/2	1-3/8	Precision Ball	XZ0622808*
8	2	600	2-3/16	1-3/16	1/2	2-3/8	Annular Ball	XZ0823108
8	2	600	2-3/16	1-3/16	3/4	2-3/8	Roller	XZ0820112*
8	2	500	2-7/16	1-9/16	1/2	2-3/8	Precision Ball	XZ0822808*

~ Wheels are complete with spanner bushing & nylon sealed retaining washers.  
 \* Precision sealed bearings and top hats.

## Prevenz™ Antimicrobial



The EPA registered and FDA compliant antimicrobial additive used in Prevenz™ wheels is designed to suppress the growth of a variety of destructive and odor causing microbes including bacteria, molds, mildew and fungi. These wheels are suitable for a variety of applications including medical equipment, food equipment, pharmaceutical, chemical, meat & poultry, processing plants and more. To order add "PREV" to end of caster number.